



computer generated image for illustrative purposes

East Midlands Energy Re-Generation (EMERGE) Centre Statement of Community Involvement

June 2020



**PROPOSED DEVELOPMENT OF THE EAST MIDLANDS ENERGY RE-GENERATION
(EMERGE) CENTRE ON LAND AT THE RATCLIFFE-ON-SOAR POWER STATION,
NOTTINGHAMSHIRE**

STATEMENT OF COMMUNITY INVOLVEMENT

JUNE 2020

CONTENTS

1.0	EXECUTIVE SUMMARY	1
2.0	INTRODUCTION.....	3
3.0	BACKGROUND	5
3.1	The Site.....	5
3.2	The Future Site.....	6
3.3	The Proposal.....	6
4.0	PRE-APPLICATION ENGAGEMENT.....	9
4.1	Overview of Public Engagement Methodology.....	9
4.2	Contacting Statutory Bodies.....	10
4.3	Stakeholder Notifications.....	11
4.4	Stakeholder Meetings.....	11
4.5	Community Newsletter	12
4.6	Stakeholder Preview Session.....	13
4.7	Media Relations.....	13
4.8	Public Information Days	14
4.9	Dedicated Email Address and Website	17
4.10	Freephone Information Line	17
5.0	RESPONSES TO THE PUBLIC INFORMATION PROGRAMME.....	19
5.1	Feedback Overview.....	19
5.2	Reply Card Responses	19
5.3	Event Feedback Forms	20
5.4	Email Feedback.....	21
6.0	RESPONSES TO COMMENTS	22
6.1	Introduction.....	22
6.2	Comments and Responses	22
7.0	POST SUBMISSION ENGAGEMENT	25
7.1	Ongoing Engagement	25
8.0	APPENDICES	26
8.1	Appendix 1 Scoping Opinion Notification Letter	27
8.2	Appendix 2 Newsletter	29
8.3	Appendix 3 Reply Card	31
8.4	Appendix 4 Stakeholder Preview Invitation Letter.....	32
8.5	Appendix 5 Public Information Day Press Release.....	34
8.6	Appendix 6 Media Coverage	37

8.7	Appendix 7 Press Advert.....	46
8.8	Appendix 8 Post-Public Information Day Press Release	47
8.9	Appendix 9 Post-Public Information Day Media Coverage	49
8.10	Appendix 10 Public Information Day Banner Stands	53
8.11	Appendix 11 Public Information Day Feedback Form	61
8.12	Appendix 12 Screenshot of the Website	63
8.13	Appendix 13 Frequently Asked Questions (FAQs).....	64

1.0 EXECUTIVE SUMMARY

- 1.1 Uniper UK Limited (Uniper) is committed to consulting with the local community regarding its Proposed Development of the East Midlands Energy Re-Generation (EMERGE) Centre on land at the Ratcliffe-on-Soar Power Station. The Proposed Development is a multifuel Energy Recovery Facility (ERF) which would generate energy from non-hazardous residual waste.
- 1.2 Residents and stakeholders were given the opportunity to provide their views and feedback regarding the proposal at all stages of the public information programme via a number of different channels. A freephone information line, email address and dedicated website were made available throughout the course of the public information programme and will remain available following submission for interested parties to receive further information and provide their feedback to the project team.
- 1.3 The public information programme commenced in tandem with the submission of the Environmental Impact Assessment Scoping Report to Nottinghamshire County Council. Letters were distributed by post to key stakeholders at Nottinghamshire County and Rushcliffe Borough Councils and immediate neighbours, to advise them of the Proposed Development.
- 1.4 Meetings were offered to division and ward Councillors, to enable these stakeholders to discuss the Proposed Development prior to them being displayed to the wider community. An initial meeting was held with the ward member for Gotham, Rushcliffe Borough Council on 4 March at Ratcliffe-on-Soar Power Station.
- 1.5 Two public information days were held at Thrumpton Village Hall and Gotham Memorial Hall on Monday 9 March and Monday 16 March respectively. The events were open from 3 p.m. to 7 p.m. Over 1,000 households were invited to attend. Additionally, a one-hour preview session from 2 p.m. to 3 p.m. for local, invited stakeholders was held at each of the events. The public information days were further publicised by a press release issued to local newspapers and an advertisement was placed in the Nottingham Post, encouraging residents to find out more and to be able to comment on the scheme. Just under 90 individuals attended the public information days. Feedback forms were available for attendees to record

their views. Overall, 83 pieces of feedback were received during the entire public information programme, which represents an 8.2 % response rate.

1.6 It was evident throughout the public information programme that local residents were interested in Uniper's plans and understood the need to avoid disposing of residual waste via landfill and move towards low carbon energy production.

1.7 Uniper remains committed to engaging with the local community and, following the submission of the planning application, will ensure that interested parties and stakeholders remain informed and updated about the proposal. This document provides a chronological account of the pre-application information programme undertaken, and a review of the feedback received.

2.0 INTRODUCTION

- 2.1 Uniper is an international energy company with around 11,500 employees and activities in more than 40 countries. With about 34 GW of installed generation capacity, Uniper is among the largest global power generators. In the UK, Uniper operates a flexible generation portfolio of seven power stations, and a fast-cycle gas storage facility. A broad range of commercial activities are offered through the Engineering Services division, while the Uniper Engineering Academy delivers high-quality technical training and government-accredited apprenticeship programmes for the utility, manufacturing and heavy industry sectors. Uniper owns and operates the Ratcliffe-on-Soar Power Station (hereinafter the Power Station).
- 2.2 The Power Station has been supplying reliable electricity for the UK energy market for over 50 years. The UK is moving away from coal to lower carbon energy solutions and with this in mind, the Government has committed to end the generation of electricity from coal-fired power stations by October 2025. A decision on a closure date for the Power Station is yet to be made, but this will be in line with Government policy. In the meantime, the Power Station continues to contribute to Britain's energy supply security.
- 2.3 Uniper is proud of the contribution that the Power Station makes to the regional economy and has been working closely with stakeholders from across the region, including the Midlands Engine, local councils, universities and Local Enterprise Partnerships to understand how it can be part of sustainable future growth in the East Midlands.
- 2.4 This Statement of Community Involvement (SCI) has been produced with the aim of clearly and concisely highlighting the community information programme undertaken by Uniper in respect of its Proposed Development at the Power Station site.
- 2.5 This document provides a chronological account of the public information activity that has been undertaken within the pre-submission stages, as well as the post-submission activity that Uniper proposes to undertake. The SCI does not cover consultations undertaken with technical consultees, which are recorded, where appropriate, elsewhere in the planning application documentation.

-
- 2.6 In order to assist with the community and stakeholder public information programme, Uniper appointed [BECG](#), a specialist communications agency, to form part of its wider project team for the Proposed Development.
- 2.7 All feedback received is accounted for and represented within this document.
- 2.8 The SCI forms part of the planning application documentation that has been submitted in support of the Proposed Development. The Planning Statement and Environmental Statement provide the background to, need for, and detailed description of the Proposed Development. As such, to avoid repetition, these details are not repeated in the SCI. However, in order that the SCI can be read in isolation, a brief outline of the background to, and description of the Proposed Development is provided below.

3.0 BACKGROUND

3.1 The Site

3.1.1 The Power Station site covers an overall area of circa 273 hectares (ha). This includes circa 167 ha lying to the north of the A453 Remembrance Way and circa 106 ha to the south of the A453. The main built elements of the Power Station and its related infrastructure are located in the northern part of the site. As illustrated on Figure 1, the EMERGE Centre is proposed to be located at the central northern end of the northern part of the Power Station site. The Application Site has never previously been fully 'developed', but has been utilised as a laydown area and car park for contractors working on the wider Power Station site. As a consequence of this activity, it is surfaced with a mixture of tarmac and compacted stone hardstanding.

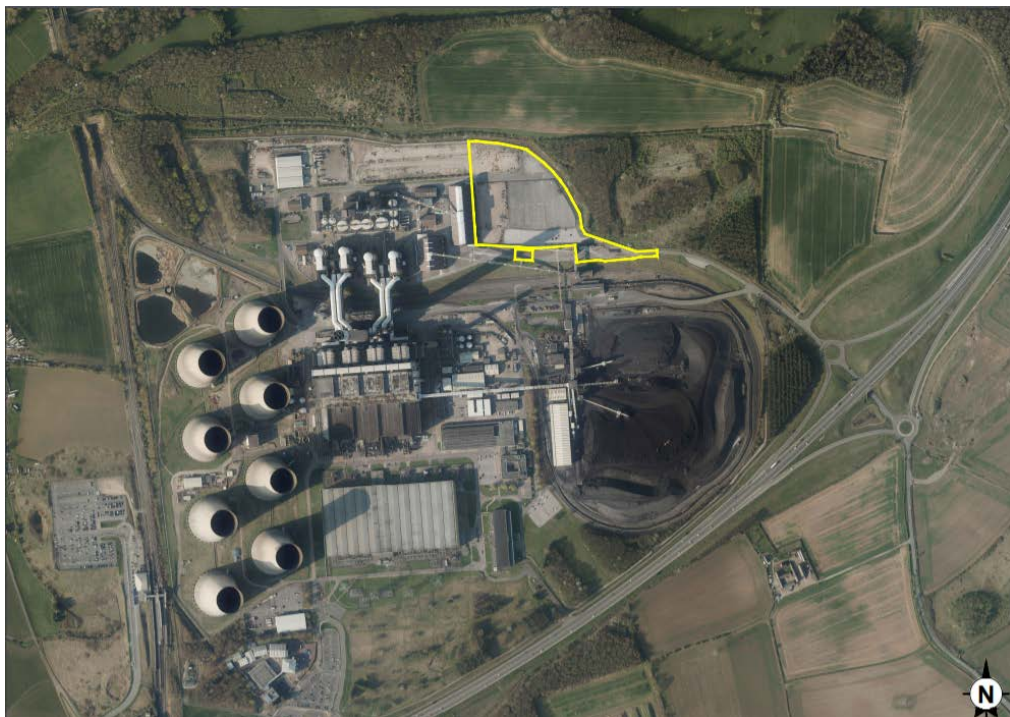


Figure 1 – EMERGE Centre site boundary

3.1.2 Figure 1 also illustrates that the Application Site benefits from an excellent existing connection to the A453 Remembrance Way. In addition, a railway line runs in a loop around the Power Station site.

3.2 The Future Site

- 3.2.1 In the context of over 50 years of coal-fired energy production drawing to a close, the Midlands Engine has identified the Power Station site as one of three strategically important locations for future economic growth in the East Midlands, the other two being around the proposed High Speed 2 (HS2) station at Toton and the existing East Midlands Airport.
- 3.2.2 To understand how the Power Station site can be part of sustainable growth in the East Midlands, Uniper has been working in collaboration with stakeholders from across the region. The vision for the Power Station is to create an employment site based around modern industrial and manufacturing uses, underpinned by a sustainable energy theme. Whilst this vision is in its early stages, the Proposed Development is viewed as the catalyst, being the first new build on the redeveloped Power Station site, by virtue of generating lower-carbon and partially renewable energy for the future industry and manufacturing uses. Further details of this site vision are set out in the Planning Statement.

3.3 The Proposal

- 3.3.1 The EMERGE Centre is the first step in Uniper's vision to create an employment site based around modern industrial and manufacturing uses, underpinned by a sustainable energy theme.
- 3.3.2 The Proposed Development is a multifuel Energy Recovery Facility (ERF), converting waste left over from the recycling process into useable energy (i.e. waste that cannot be recycled). It would be a conventional twin line combustion plant, based on grate technology. It would accept non-hazardous residual waste and is also intended to be capable of accepting certain waste biomass fuels. The Proposed Development would have a gross electricity generating capacity of 49.9 megawatts (MW) and the anticipated waste throughput would be circa 500,000 tonnes per annum (tpa).
- 3.3.3 The Proposed Development would contribute to the diversion of waste from landfill and the utilisation of residual waste to generate energy (including renewable energy). After subtracting the power used to run the facility itself, it would have the ability to

export approximately 43.4 MW of electricity to the local electricity grid, a significant proportion of which would be classed as renewable. This is sufficient to meet the average annual domestic electricity needs of about 90,000 homes. Whilst the Proposed Development would have a grid connection, it could also supply power to individual customers via a private wire system. Finally, it would, in the event that viable opportunities for the supply of heat do not exist from the outset, also be combined heat and power ready and capable of providing heat in the form of steam (or possibly hot water) for use by local heat users. The short to medium term objective is that the Proposed Development could serve a site heat network, and potentially also (via heat exchangers) a cooling network.

- 3.3.4 The EMERGE Centre would be located within a main building, that would include:
- A Reception / Tipping Hall, with points of access and egress set at ground level;
 - A below ground Bunker;
 - A Boiler Hall;
 - A Turbine Hall, with two turbines for resilience;
 - A Flue Gas Treatment (FGT) facility;
 - An Incinerator Bottom Ash bay; and
 - Offices, workshop, stores and staff welfare facilities.
- 3.3.5 The Air-Cooled Condenser is proposed to be located to the west of the main building and north of the Turbine Hall. It would form a separate standalone structure in order to enable sufficient air flow through the units.
- 3.3.6 The twin side by side stacks would protrude through the Flue Gas Treatment facility roof and extend to a height of circa 110 m.
- 3.3.7 The Proposed Development would also include the following ancillary / infrastructure:
- Vehicle weighbridges and weighbridge office;
 - Substation (within its own enclosure);
 - Fire water tank and associated pump house;
 - Tanks / silos (containing fuel oil and FGT reagent);
 - Internal circulation roadways and manoeuvring areas;
 - Employee and visitor parking for cars, motorbikes and cycles;

-
- Fencing and gating;
 - Service connections;
 - Surface water drainage;
 - Lighting and CCTV; and
 - New areas of hard and soft landscaping.

4.0 PRE-APPLICATION ENGAGEMENT

4.1 Overview of Public Engagement Methodology

- 4.1.1 Uniper undertook its public information programme in respect of the Government's National Planning Policy Framework (NPPF) which states that: *“early engagement has significant potential to improve the efficiency and effectiveness of the planning application system for all parties.”* It also highlights that: *“good quality pre-application discussion enables better coordination between public and private resources and improved outcomes for the community.”* (paragraph 39)
- 4.1.2 The Site lies wholly within the administrative areas of Rushcliffe Borough Council (RBC) and Nottinghamshire County Council (NCC), the latter being the planning authority for waste management related development. NCC adopted its Statement of Community Involvement (SCI) in 2007. The Council's SCI has been reviewed twice, in 2013 and 2018.
- 4.1.3 The Council's SCI sets out the approach to public consultation and involvement in the preparation of minerals and waste plans and the consideration of planning applications.
- 4.1.4 The document also contains guidelines for developers to follow when consulting on planning applications within the administrative boundaries of NCC.
- 4.1.5 The Council's SCI advises developers of large applications to undertake pre-application consultation: *“For significant or major applications, developers will be encouraged to carry out pre-application consultation with interested local parties and community bodies. This should allow any issues to be addressed early in the planning process, and hopefully prior to the submission of a planning application, to reduce the potential for delay in the decision making process; and improve the quality of applications.”*
- 4.1.6 A variety of public information methods are suggested by the Council's SCI which include public meetings, newsletters, press releases, and adverts in the local newspaper.

4.1.7 Against this background, prior to submitting the formal planning application for the EMERGE Centre, Uniper undertook a public information programme, as detailed in this document.

4.1.8 The scope of the public information programme was agreed with NCC before commencement.

4.2 Contacting Statutory Bodies

4.2.1 Uniper submitted pre-application advice requests to NCC and the Environment Agency (EA) on 12 December 2019 and 20 December 2019 respectively.

4.2.2 A pre-application advice meeting was held with officers from NCC on 10 January 2020 at the Application Site. During the meeting, the general principles relating to the Proposed Development were discussed.

4.2.3 An official response from NCC was received on 3 February. The letter provided advice on a number of topics, including, but not limited to:

- Relevant policies;
- The Council's view on Green Belt Policy and the land use principle;
- The approach to determining the 'need' for the development from a sustainable waste management perspective;
- Environmental Impact Assessment;
- Environmental Impact Assessment Baseline;
- Cumulative impact;
- Scope and content of the overall planning application;
- Sustainability / carbon assessment;
- Pre-application public information requirements; and
- Sustainable transport and overall design of the main structures.

4.2.4 The request for the Environmental Impact Assessment Scoping Opinion was submitted to NCC on 14 February 2020. The formal Scoping Opinion was provided on 6 April 2020. The opinion provided confirmation on the scope and approach to the Environmental Impact Assessment.

4.2.5 A meeting was held with the EA on 21 January 2020 to discuss the Environmental Permit application.

4.2.6 The meeting provided the opportunity to discuss the Proposed Development with the EA and sought advice on the possibility of commencing the environmental permit application process in parallel with the planning application.

4.3 Stakeholder Notifications

4.3.1 At the time of the submission of the Scoping Opinion to NCC (14 February 2020), Uniper wrote to the Gotham ward member at RBC and the two division members for East Leake & Ruddington at NCC. The purpose of the letter was to advise them that the Scoping Opinion had been submitted and extend an invitation to attend a meeting at the Power Station. The letter also advised that Uniper would shortly be undertaking a public information programme with the local community. A copy of the letter can be found at Appendix 1.

4.4 Stakeholder Meetings

4.4.1 Uniper set up a meeting with the RBC Gotham ward member (Councillor Rex Walker) on 4 March 2020 to brief the Councillor on the Proposed Development.

4.4.2 In summary, Cllr Walker supported the redevelopment of the Power Station site for high value jobs and skills and indicated this was strongly preferable to alternatives (i.e. logistics sheds and housing). However, Cllr Walker was keen to understand what the EMERGE Centre impacts (traffic, emissions, noise) would be compared to the Power Station when operational.

4.4.3 A meeting was held with the two ward members for East Leake & Ruddington (Councillor Reg Adair and Councillor Andrew Brown) on 20 March 2020. Due to diary commitments, the meeting was held after the public information events.

4.4.4 In summary, both members understood the aspirations for the long-term development of the Power Station site and saw this as a real opportunity. Discussions focused on mitigating local impacts of the Proposed Development on

local residents in terms of traffic (avoiding local village roads and peak time deliveries), community benefit and the issue of poor public transport links.

4.5 Community Newsletter

4.5.1 Uniper organised two public information days at Thrumpton Village Hall and Gotham Memorial Hall on 9 and 16 March 2020 respectively. The purpose of the events was to present Uniper’s plans to the wider community and to gain feedback prior to submitting the planning application.

4.5.2 A community newsletter with a reply card and a postage-paid envelope was distributed to just over 1,000 households and businesses close to the site to inform the local community about the Proposed Development and to invite them to the public information days. The following map illustrates the distribution area:



Figure 2 – Newsletter distribution area

4.5.3 The four-page newsletter was sent by first class post on 27 February 2020. A copy of the newsletter can be found at Appendix 2. A copy of the reply card can be found at Appendix 3.

4.6 Stakeholder Preview Session

4.6.1 Uniper also sent a copy of the newsletter with a covering letter to local stakeholders inviting them to attend a preview session at one of the public information days. The preview sessions were held from 2 p.m. to 3 p.m., just prior to the events being open to the general public. The letters were sent to:

- Ward members at NCC and RBC;
- Chief Executives at NCC and RBC;
- Cabinet members at NCC;
- Members of the planning committee at NCC;
- Parish Councils;
- Nearby neighbours and businesses; and
- Third party groups.

4.6.2 A copy of the stakeholder preview invitation letter can be found at Appendix 4.

4.7 Media Relations

4.7.1 To ensure the wider community was aware of the Proposed Development, a press release was issued to local newspapers. The press release contained the following information:

- An overview of the proposal;
- The location of the proposed site;
- Details of the public information days; and
- Details of how to view the plans and the various methods that individuals could provide their feedback, including the freephone information line and the dedicated website address and email.

4.7.2 The press release was issued to the Nottinghamshire Post, West Bridgford Wire, BBC East Midlands Today and ITV Central on 3 March 2020. Articles appeared as follows:

Nottingham Post	3 March
West Bridgford Wire	3 March
Leicester Mercury	14 March
Loughborough Echo	14 March

4.7.3 A copy of the press release can be found at Appendix 5. A copy of the media coverage can be found at Appendix 6.

4.7.4 Uniper published an advertisement in the Nottingham Post which appeared in the Nottingham Post on Wednesday 4 March. The advert invited readers to visit either of the public information days. A copy of the newspaper advert can be found at Appendix 7.

4.7.5 After the public information events, Uniper issued a press release to encourage people to have their say on the plans in advance of the submission of the planning application. The press release contained the following information:

- How to have your say;
- Overview of the public information events;
- Where to find new, additional information on the website; and
- Freephone and email contact details.

4.7.6 The press release was issued to the Nottinghamshire Post, West Bridgford Wire, BBC East Midlands Today and ITV Central on 25 March 2020. It was also picked up by a number of trade and technical publications. Articles appeared as follows:

Nottingham Post	30 March
ENDS Report	30 March
Let's Recycle	3 April
SparkSpread	6 April

4.7.7 A copy of the post-information events press release can be found at Appendix 8. A copy of the media coverage following the information events can be found at Appendix 9. The ENDS report and SparkSpread articles can only be viewed via a subscription.

4.8 Public Information Days

4.8.1 Uniper hosted two public information days at Thrumpton Village Hall, Church Lane, Thrumpton, NG11 0AX and Gotham Memorial Hall, Nottingham Road, Gotham, NG11 0HE on 9 and 16 March respectively. Both events were open to the public from 3 p.m. to 7 p.m.



Visitors at the Thrumpton Village Hall event

4.8.2 Around 39 people attended the Thrumpton Village Hall event and 49 attended the event at Gotham Memorial Hall. The stakeholder preview sessions were held from 2 p.m. to 3 p.m. on both occasions.

4.8.3 Notable attendees to the events included:

- Members of Barton in Fabis, Gotham, Kingston upon Soar and Thrumpton Parish Councils;
- Members from North West Leicestershire Borough Council; and
- Chief Executive of Rushcliffe Borough Council.

4.8.4 Project specific banner stands were on display at both events. The banner stands included information about:

- The public information and planning process;
- Uniper and Ratcliffe-on-Soar Power Station;
- The proposed EMERGE Centre;
- How energy recovery works;
- Central to the East Midlands economy;

-
- Sections of the Environmental Impact Assessment:
 - Air quality and odour;
 - Ecology;
 - Landscape and visual impact;
 - Noise;
 - Surface water and flood risk;
 - Traffic and transportation; and
 - Next steps.

4.8.5 A copy of the public information day banner stands can be found at Appendix 10.

4.8.6 The following materials were also available:

- Hard copies of the banner stands;
- Copies of the newsletter;
- A feedback form;
- Various viewpoints of what the centre could look like;
- The energy recovery process; and
- Computer generated images (CGIs) of the EMERGE Centre.

4.8.7 The events also provided:

- A ballot box for posting feedback forms;
- Postage-paid envelopes to return the feedback forms;
- Direction signs leading people to the events; and
- Distribution map of newsletter.

4.8.8 The feedback form could either be completed at the venue or posted back using the supplied postage-paid envelopes. These were then collated, and the feedback analysed. A copy of the public information event feedback form can be found in Appendix 11.

4.8.9 Representatives from Uniper and the project team were available to answer questions throughout.

4.9 Dedicated Email Address and Website

- 4.9.1 A website was set up displaying information about the proposal and will continue to be updated throughout the planning process. The website can be found at www.uniper.energy/emerge.
- 4.9.2 An email address was also available for residents and stakeholders to send through their feedback. The email address is emerge@uniper.energy.
- 4.9.3 The website address and email address were printed on the newsletter, feedback forms, included in the press releases and advert and other relevant correspondence.
- 4.9.4 The website includes:
- Information about the proposal, including a site plan;
 - Information about Uniper;
 - Relevant plans and CGIs; and
 - Updates on the planning process.
- 4.9.5 Following the public information days, a PDF copy of the banner stands was added to the website, so that anyone who was unable to attend on the day could view the Proposed Development at a more convenient time.
- 4.9.6 The website home page has been viewed a total of 1,325 times as of Sunday 31 May 2020.
- 4.9.7 A screenshot of the website can be found at Appendix 12.

4.10 Freephone Information Line

- 4.10.1 During the public information programme, access to a freephone telephone enquiry line was offered to those who wished to find out more about the proposal, or to register their comments via the telephone.
- 4.10.2 The telephone number used (**0800 169 5290**) was in operation Monday to Friday between the hours of 09:00 and 17:30. Outside of these hours, a voicemail facility

was available for messages to be left and were responded to at the earliest opportunity.

- 4.10.3 The freephone number was published in the newsletter, press advert, press releases and on the website. The enquiry line will remain in use throughout the planning process.

5.0 RESPONSES TO THE PUBLIC INFORMATION PROGRAMME

5.1 Feedback Overview

5.1.1 In total, there were 83 pieces of feedback recorded. 48 reply cards from the newsletter were returned by post and 35 event feedback responses were either completed on the day at the public information day or returned in the post. There was one enquiry received via the email address. No calls were made to the freephone enquiry line.

5.2 Reply Card Responses

5.2.1 Respondents were asked to reply yes or no to the following question: *Do you think there is a need to move to lower carbon energy solutions?*

5.2.2 48 reply cards were received during the pre-application public information period. Respondents answered the question as below:

Yes	No	No view	Total
44	1	3	48
92 %	2 %	6 %	100 %

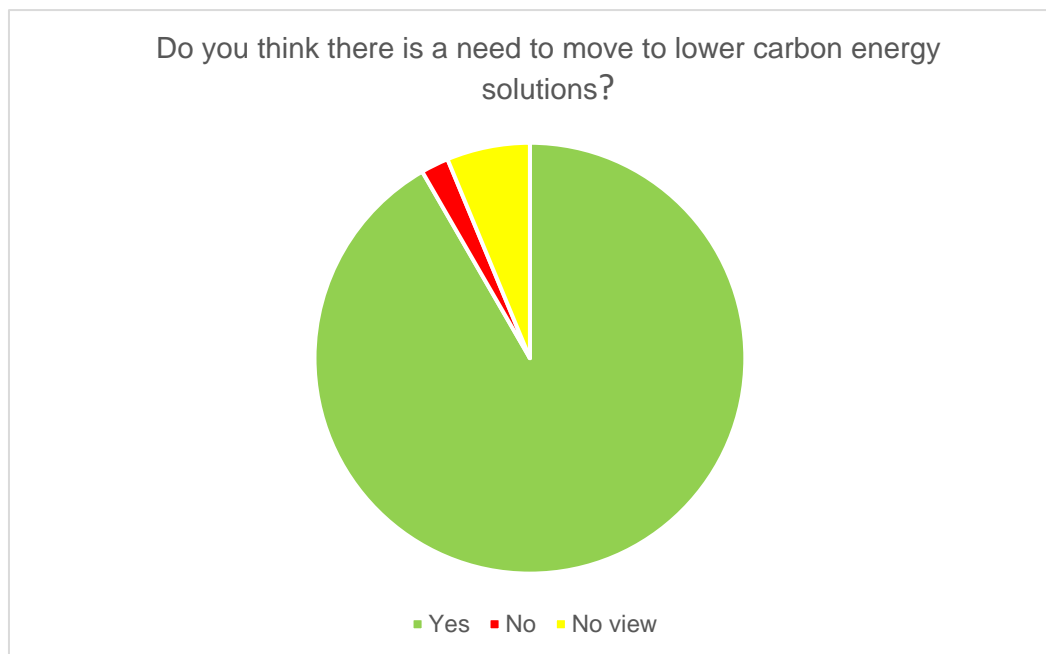


Figure 3 – Lower Carbon Energy Solutions Pie Chart

5.2.3 Additionally, there was a section on the reply card for respondents to make comments. 21 people provided a comment in the box. The main themes and the frequency mentioned were:

Comment	Frequency
Emissions	9
Support for the project	6
Storage of waste	2
Smell	2
Reduction in landfill	2
Traffic and transport	2

5.3 Event Feedback Forms

5.3.1 There were 35 feedback forms completed and / or returned during the public information programme period.

5.3.2 Respondents were asked “*How informative have you found our event?*” and given the options of:

Very informative	Somewhat informative
Not informative	I’m unsure

5.3.3 Uniper was pleased that, overall, most respondents found the events either “very informative (26)” or “somewhat informative (8)”. One respondent did not select an option. The below chart shows the response rate:

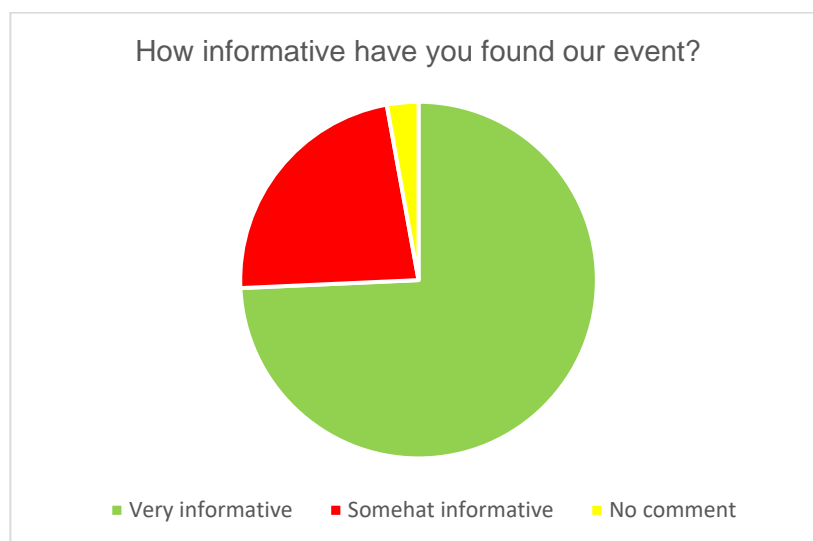


Figure 4 – How Informative was the Event Pie Chart

5.3.4 The feedback form also had a text box, where people could provide comments and / or ask questions. 33 respondents added a comment out of the 35 feedback forms received. The main themes and the frequency mentioned were:

Comment	Frequency
Traffic and transport	9
Use of rail	8
Support for project	8
Good information provided	8
Emissions	5
Further exhibitions	3
Landscaping (more trees)	3

5.4 Email Feedback

5.4.1 There was one email received from a local stakeholder, enquiring about how the electricity generated would be distributed. Uniper replied that the power from the EMERGE Centre would feed directly into the local electricity distribution network.

6.0 RESPONSES TO COMMENTS

6.1 Introduction

6.1.1 All comments received have been reviewed by the project team and, where possible, amendments were made to the proposal. Many of the issues raised during the public information programme are covered in the application documents which accompany this response.

6.1.2 Uniper is encouraged by the level of support and interest it has received to date for the EMERGE Centre. It would like to thank those residents and stakeholders who took part and provided their feedback.

6.1.3 The main themes which arose during the pre-application public information programme and Uniper's response to each are detailed below.

6.1.4 Additionally, a Frequently Asked Questions (FAQs) document has been uploaded to the website, so that people can source further information. The weblink is <https://www.uniper.energy/emerge#projectdocuments>.

6.1.5 A copy of the FAQs document can be found at Appendix 13.

6.2 Comments and Responses

6.2.1 Table 1 lists the most frequent comments received and responses from the project team:

Table 1: Most frequent comments received and responses from the team

Comment	Response
Questions and concerns about emissions	The EMERGE Centre will be designed to treat non-hazardous waste only. Uniper's assessment of potential environmental effects relating to the construction and operation of the facility concluded that the EMERGE Centre will not have any significant environmental effects in relation to air quality, odour and human health. The design will comply with the requirements of the Industrial Emissions Directive and the Best Available Techniques (BAT) Conclusions regulating emission limits for facilities like the EMERGE Centre. A continuous emissions monitoring system (CEMS) will be installed at the EMERGE Centre to monitor the environmental performance of the facility once it becomes operational. This system will, for example, measure the concentration of gases emitted during the energy recovery process. The emissions data is collected, recorded and reported to the Environment Agency to ensure compliance with the emissions limits set by the same body.
Support for the Scheme	Uniper is delighted that many respondents and visitors to the public information events agreed with the principle of generating electricity from non-recyclable waste. Support was also expressed for the wider plans for the area and retention of jobs.
Traffic and Transportation enquiries and concerns	<p>Uniper's preferred road access to and from the site during construction and operation would be via the Power Station HGV entrance located off the A453 onto Barton Lane. A transport assessment has been carried out as part of our Environmental Impact Assessment (EIA). The assessment looked at any likely impacts from traffic during both the construction and operation of the facility.</p> <p>During operation, we anticipate that the vast majority of deliveries to site will take place Monday to Friday, between the hours of 06.00 and 18.00, with only a limited number of movements occurring outside of these times. We have estimated that there will be approximately 155 HGVs coming to the site on weekdays, which equates to around 310 additional two-way HGV movements on the local highway (an increase of less than 7 % on existing HGV levels). Weekday car trips for staff and visitors are estimated at 50 (i.e. 100 two-way car movements).</p>
Exploring the use of rail deliveries	The residual waste delivered to site would initially be transported by road in enclosed vehicles / containers. Options are being explored to use the existing railway line to accept deliveries of residual waste to the site.
Storage of waste	The proposed EMERGE Centre will have enough waste storage capacity to operate the facility for five days at a time. All waste will be fully enclosed within the main building under negative pressure to ensure no odour escapes outside into the atmosphere. Our planning application does not include plans for separate waste sorting on site. The waste delivered to site will come pre-sorted from existing waste transfer stations. The

Comment	Response
	EMERGE Centre would support the future addition of advanced recycling and reuse technologies, and options are being explored in this area.

7.0 POST SUBMISSION ENGAGEMENT

7.1 Ongoing Engagement

- 7.1.1 Uniper is pleased with the level of interest in its proposed EMERGE Centre and will continue to engage with relevant stakeholders and the local community. The freephone information line, dedicated email and website will all remain live during the planning process, should anyone wish to contact the project team with any further questions or comments.
- 7.1.2 Additional information will be posted onto the dedicated project website as it becomes available.
- 7.1.3 The project team will continue to liaise with interested parties, as and when requested.

8.0 APPENDICES

Appendix 1	Scoping Opinion Notification Letter
Appendix 2	Newsletter
Appendix 3	Reply Card
Appendix 4	Stakeholder Preview Invitation Letter
Appendix 5	Public Information Day Press Release
Appendix 6	Media Coverage
Appendix 7	Press Advert
Appendix 8	Post-Public Information Day Press Release
Appendix 9	Post- Public Information Day Media Coverage
Appendix 10	Public Information Day Banner Stands
Appendix 11	Public Information Day Feedback Form
Appendix 12	Screenshot of the Website
Appendix 13	FAQs Document

8.1 Appendix 1 Scoping Opinion Notification Letter



14 February 2020

Dear [Title] [Surname]

RE: Meeting Invitation to Discuss Proposed EMERGE Centre at Ratcliffe-on-Soar Power Station

Ratcliffe-on-Soar Power Station has been supplying reliable electricity for the UK energy market for over 50 years. The UK is moving away from coal to lower carbon energy solutions and, with this in mind, the Government has committed to end the generation of electricity from coal-fired power stations by October 2025. A decision on a closure date for Ratcliffe has yet to be made, but this will be in line with Government policy. In the meantime, the power station continues to contribute to Britain's energy supply security.

Uniper UK Limited is proud of the contribution that Ratcliffe-on-Soar makes to the regional economy and we have been working closely with stakeholders from across the region, including the Midlands Engine Development Corporation, to understand how we can be part of sustainable growth here in Nottinghamshire.

Our vision is to move towards becoming a zero-carbon technology and energy hub for the East Midlands. In addition to generating sustainable electricity and heat for use by world-class businesses and institutions who choose to locate to Ratcliffe-on-Soar, we'd also be bringing advanced recycling and re-use technology to the site.

The first step in delivering our vision will be the East Midlands Energy Re-Generation (EMERGE) Centre, for which we will shortly be applying for planning permission.

The EMERGE Centre will use safe, environmentally sustainable and reliable technology to generate up to 49.9MW of electricity – enough to power about 90,000 homes – as well as having capability to produce heat from around 500,000 tonnes of non-recyclable waste that currently goes to landfill or is exported outside of the UK.

We estimate that the EMERGE Centre could potentially create up to 600 temporary construction jobs, and around 45 permanent jobs on the site, once operational. This project will be the first step towards a lower carbon future for Ratcliffe-on-Soar and will help the East Midlands meet its landfill diversion targets.

Registered in England and Wales company no.2796628
Registered Office: Corpton House, 2360 The Crescent, Birmingham Business Park, Birmingham. B37 7YE



If approved, the EMERGE Centre will act as a catalyst for our wider vision, helping to attract other businesses who can benefit from the availability of reliable, lower carbon energy generated on-site.

Prior to any planning submission and before we undertake an extensive programme of public engagement about our ambitions; we have submitted an EIA Scoping Request to Nottinghamshire County Council, which will be a matter of public record.

As Redevelopment Manager at Ratcliffe-on-Soar Power Station I would very much like to invite you to meet with us at the power station in your role as [a local ward / division] member to explain our plans in more detail and answer any questions that you may have. We can also discuss the scope of our pre-application public engagement programme with you.

Uniper has appointed Built Environment Communications Group (BECG) to undertake the public engagement programme, providing independent support and feedback analysis. My colleague Carole Riley from BECG will be in contact shortly to arrange a mutually convenient date for the meeting. Alternatively, she can be contacted directly on 07778 318468 or carole.riley@becg.com.

I look forward to meeting you soon.
Yours sincerely

Dr Andy Read
Ratcliffe Redevelopment Manager
Uniper UK Limited

Registered in England and Wales company no.2796628
Registered Office: Compton House, 2300 The Crescent, Birmingham Business Park, Birmingham. B37 7YE

8.2 Appendix 2 Newsletter

About Uniper

Uniper is an international energy company with around 11,000 employees and operations in 40 countries. In the UK, Uniper operates a flexible generation portfolio of seven power stations, and a fast-cycle gas storage facility. A broad range of commercial activities are offered through the Engineering Services division, while the Uniper Engineering Academy delivers high-quality technical training and government-accredited apprenticeship programmes for the utility, manufacturing and heavy industry sectors. Uniper owns and operates the Ratcliffe-on-Soar power station.

Benefits of the EMERGE Centre

<p>Generate up to 49.9 MW of lower carbon electricity</p> <p>Enough electricity to power around 90,000 households</p>	<p>Create around 45 full time jobs once operational</p> <p>Create up to 600 jobs during the peak construction period</p>	<p>Reduce landfill or export of waste by around 500,000 tonnes/year</p> <p>Help the East Midlands region meet its landfill diversion targets</p>
---	--	--

Catalyst for wider vision for **zero carbon technology** and energy hub at Ratcliffe-on-Soar

Next Steps

May/June	Late 2020	Early 2022	Autumn 2024	Early 2025
Application submitted	Planning decision	Construction works expected to start	Commissioning	Commercial operation

uni per

Freephone: 0800 169 5290 | Email: emerge@uniper.energy | Web: uniper.energy/emerge



Uniper UK Limited is bringing forward plans for development of an Energy Recovery Facility (ERF) at the Ratcliffe-on-Soar Power Station site – known as East Midlands Energy Re-Generation (EMERGE) Centre. The facility would generate energy from non-hazardous domestic and commercial waste left over from the recycling process.

Ratcliffe-on-Soar power station has been supplying reliable electricity for the UK energy market for over 50 years. The UK is moving away from coal to lower carbon energy solutions, and the Government has committed to end the generation of electricity from coal-fired power stations by October 2025. A decision on a closure date for the power station has yet to be made, but this will be in line with Government policy. In the meantime, the power station continues to contribute to Britain's energy supply security.

Uniper is proud of the contribution Ratcliffe-on-Soar makes to the East Midlands regional economy. To understand how

the site can be part of sustainable growth in the region, Uniper has been working in collaboration with stakeholders, including the Midlands Engine, local councils, universities and Local Enterprise Partnerships.

Our vision is to move towards becoming a zero carbon technology and energy hub for the East Midlands, providing reliable and lower carbon heat and power for use by world-class businesses and institutions, who choose to locate to the site in the future.

The first step in delivering our vision will be the EMERGE Centre, for which we will shortly be applying for planning permission.

The EMERGE Centre will use safe, environmentally sustainable and reliable technology to generate up to 49.9MW of electricity – enough to power about 90,000 homes – as well as having capability to produce heat from around 500,000 tonnes of non-recyclable waste. This facility would deliver a lower carbon future for the site, and would result in less waste going to landfill or being exported outside of the UK.

Visit one of our Public Information Days

Thrumpton Village Hall
Monday 9th March 2020
3pm-7pm

Gotham Memorial Hall
Monday 16th March 2020
3pm-7pm

The consenting process

Uniper will be submitting a planning application supported by an Environmental Impact Assessment in Summer 2020, to Nottinghamshire County Council (NCC) - the local authority responsible for determining planning applications for facilities like the EMERGE Centre. It will address the potential impacts of the proposed development on the environment and set out how they will be mitigated, including air quality, noise, ecology, landscape, traffic and highways. Feedback from the public information events will be used to help inform the final design and assessments. Once the planning application is submitted there will be a period for consideration and consultation by NCC, who will also ask a number of statutory bodies and local stakeholders for their views.

A separate application for an environmental permit will be submitted to the Environment Agency (EA). The environmental permitting process is separate from planning and will govern the operation of the EMERGE Centre. The permit will only be granted if the EA is satisfied the facility would meet the requirements of the Industrial Emissions Directive and the Best Available Techniques (BAT) Conclusions, regulating emissions limits for facilities like the EMERGE Centre.

Central to the East Midlands economy

The Ratcliffe-on-Soar site benefits from excellent transport links, including road and rail, as well as having existing infrastructure in place to allow for sustainable power projects, including the EMERGE Centre, to connect to the National Grid.

Uniper has been working closely with the Midlands Engine and local councils who are currently undertaking a feasibility study for the creation of a development corporation; this initiative has identified the proposed HS2 station at Toton, the East Midlands Airport and the Ratcliffe-on-Soar sites as amongst the most strategically important catalysts for future economic growth in the East Midlands region.

Our vision for the site is to create employment based around modern industrial and manufacturing uses, with sustainable onsite energy generation.



The vision seeks to deliver:

- High value jobs
- Modern industry and manufacturing served by an on-site sustainable 'Energy Hub'
- Research, development and innovation
- A centre to foster regional talents (including universities and established industry)
- A national focal point for low and zero carbon technology

How energy recovery works

Energy recovery facilities play an important role in helping meet the UK's ambitions to effectively and efficiently reduce waste and manage its impact on the environment. They take non-hazardous waste left over from the recycling process, and which have no viable alternative use, to be converted into reliable, sustainable and lower carbon energy, avoiding the need for landfill.

The technology is well established and there are over 400 similar facilities in operation across Europe, including city centre locations, such as Copenhagen, Paris, Sheffield and Cardiff.

The EMERGE Centre would use proven technology under carefully controlled conditions, to convert waste left over from the recycling process into useable lower carbon energy, by applying a thermal treatment to non-hazardous materials to generate heat and electricity.

The gases produced during this process are carefully treated to meet the strict emissions regulations of the European Industrial Emissions Directive, before being released through the flue stacks. These gases are monitored 24 hours a day, 7 days a week by the Environment Agency to ensure they are within safe limits.

Dealing with our waste

The EMERGE Centre is designed to be able to thermally treat a wide range of non-recyclable wastes sourced from both commercial and local authority sources. This includes the waste people put into their non-recyclable (usually black) wheelie bins. It also has the ability to include biomasses as part of the fuel mix, which would allow the EMERGE Centre to cope with any future changes in waste composition, for example, as a result of improved recycling, reduced plastic use, or separate collection of food wastes.

After reducing, reusing and recycling, the recovery of energy from waste is considered to be the most sustainable option for treatment of residual waste. There are a number of benefits, including:

- Treating waste that cannot be recycled or composted and is currently buried in landfill or exported outside the UK
- Reducing the amount of methane released from landfill (methane is over 20 times more damaging compared to carbon dioxide)
- Generating energy in the form of electricity and heat
- Supplying lower carbon energy to the National Grid
- Delivering much needed sustainable residual waste management infrastructure within the East Midlands region

Join us at our Public Information Days

We are hosting two public information days for local residents. The events are taking place at:

Monday 9th March 2020

Thrumpton Village Hall
Church Lane, Thrumpton
NG11 0AX

Monday 16th March 2020

Gotham Memorial Hall
(Moonrakers Room)
Nottingham Road, Gotham
NG11 0HE

Both events will be open from **3pm to 7pm** and you are welcome to join us at a time convenient to you. Members of the project team will be available to answer your questions.

Please take a moment to complete the enclosed reply card and return it to us in the postage-paid envelope.

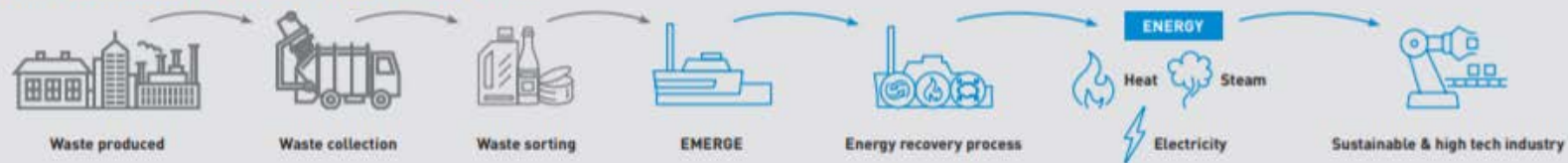
Contact Us:

Freephone:
0800 169 5290

Email:
emerge@uniper.energy

Web:
uniper.energy/emerge

A more sustainable approach to waste management



8.3 Appendix 3 Reply Card

Privacy Statement

By filling-in and returning this form to us you are agreeing that we can hold and process your personal data in relation to this public consultation exercise.

- We will only share your personal data with the Uniper UK Limited planning team for planning evaluation purposes.
- Your identifiable, personal data will not be used for any other purposes without your consent.

We will use your data to:

- Send you updates about the project (where you provide us with your contact details).
- Develop a Statement of Community Consultation (or similar document) about this public consultation that will be submitted to the planning authority or similar body; this will be a publicly available document. Your comments will be anonymous, and we will only identify you in these reports with your express permission.

If you provide us with your contact details, we might also contact you to ask you more about the comments you've made.

Your Contact Details

We will use these details to contact you and update you on the proposals. You don't have to fill in this section if you'd rather we didn't contact you.

Address

Telephone
Email

Do you think there is a need to move to lower carbon energy solutions? YES NO

***PLEASE COMPLETE IN BLOCK CAPITALS**

Once completed, please place this in the Business Reply envelope and post it to us. You do not need to affix a stamp.

About the Consultation

We welcome feedback from local residents and stakeholders on our proposed EMERGE Centre for the East Midlands. Uniper UK Limited believes that the views of the local community are important, along with conservation and economic factors, when developing sites.

Your Details

If you choose not to fill in all parts of this section, we will not be able to include your comments in the consultation process.

Title (Miss/Mrs/Ms/Mr/Other)
First Name or Initial
Surname
Postcode
Age Group (please circle)
Under 13 13-17 18-24 25-34 35-44 45-54 55-64
65-74 75-84 85+

Any additional comments

Data Protection

We hold all personal data in accordance with the General Data Protection Regulation (GDPR) [EU] 2016/679 and your personal data will not be transferred outside of the European Economic Area. You can see our full Privacy Statement, Data Protection Policy, Data Retention Policy and find out how to make a Subject Access Request at the following website address becg.com/dp or by contacting us on 01962 893 893 / dataprotection@becg.com.

19420/0220

8.4 Appendix 4 Stakeholder Preview Invitation Letter



[Title] [First Name] [Surname]
[Job Title]
[Address 1]
[Address 2]
[Address 3]
[Address 4]
[Postcode]

27 February 2020

Information line: 0800 169 5290

Dear [Title] [Surname],

Proposed EMERGE Centre at Ratcliffe-on-Soar Power Station

Ratcliffe-on-Soar power station has been supplying reliable electricity for the UK energy market for over 50 years. The UK is moving away from coal to lower carbon energy solutions and with this in mind, the Government has committed to end the generation of electricity from coal-fired power stations by October 2025. A decision on a closure date for Ratcliffe has yet to be made, but this will be in line with Government policy. In the meantime, the power station continues to contribute to Britain's energy supply security.

Uniper UK Limited is proud of the contribution that Ratcliffe-on-Soar makes to the regional economy and we have been working closely with stakeholders from across the region, including the Midlands Engine, to understand how we can be part of sustainable growth here in the East Midlands.

Our vision is to move towards becoming a zero carbon technology and energy hub for the East Midlands. In addition to generating sustainable electricity and heat for use by world-class businesses and institutions who choose to locate to Ratcliffe-on-Soar, we'd also be bringing advanced recycling and re-use technology to the site.

The first step in delivering our vision will be the East Midlands Energy Re-Generation (EMERGE) Centre, for which we will shortly be applying for planning permission.

The EMERGE Centre will use safe, environmentally sustainable and reliable technology to generate up to 49.9MW of electricity – enough to power about 90,000 homes – as well as having capability to produce heat from around 500,000 tonnes of non-recyclable waste.

We estimate that the EMERGE Centre could potentially create up to 600 temporary construction jobs, and around 45 permanent jobs on the site, once operational.



This facility would deliver a lower carbon future for the site and would result in less waste going to landfill or being exported outside of the UK. If approved, the EMERGE Centre will act as a catalyst for our wider vision, helping to attract other businesses who can benefit from the availability of reliable, lower carbon energy generated on-site.

We have recently sent newsletters to around 1,000 households close to the site, inviting them to attend our public information days at Thrumpton Village Hall and Gotham Memorial Hall on 9th and 16th March (respectively) from 3pm to 7pm. Given your role in the community, we would like to invite you to a stakeholder preview session at one of our public information days. You are, of course, welcome to attend at any time that is convenient to you. The preview sessions will take place as follows:

- Thrumpton Village Hall, Church Lane, Thrumpton, NG11 0AX – Monday 9th March 2-3pm
- Gotham Memorial Hall, Nottingham Road, Gotham, NG11 0HE – Monday 16th March 2-3pm

Further information about our proposals can be found in the enclosed newsletter or at uniper.energy/emerge which we will continue to update throughout the planning process. Additionally, should you have any questions or need further information, please do not hesitate to contact our information line on 0800 169 5290 or email us at emerge@uniper.energy.

Yours sincerely,

Dr Andy Read
Ratcliffe Redevelopment Manager
Uniper UK Limited

8.5 Appendix 5 Public Information Day Press Release



Press Release
February 28, 2020

Public engagement programme launched for new energy project at Ratcliffe-on-Soar power station site

- Uniper is putting forward plans for the development of an energy recovery facility, known as the EMERGE Centre at power station site
- Project would be first step towards creating a lower carbon future for Ratcliffe-on-Soar
- EMERGE Centre would be capable of generating up to 49.9MW of electricity – enough to power around 90,000 homes

Plans are being developed by Uniper UK Limited, for a new energy project at the Ratcliffe-on-Soar power station site – known as the East Midlands Energy Re-Generation (EMERGE) Centre. The facility would generate energy from non-hazardous domestic and commercial waste left over from the recycling process.

Ratcliffe-on-Soar power station has been supplying reliable electricity to the UK energy market for over 50 years. The UK is now moving away from coal to lower carbon energy solutions and, the Government has committed to end the generation of electricity from coal-fired power stations by October 2025. A decision on a closure date for Ratcliffe-on-Soar has yet to be made, but this will be in line with Government policy. In the meantime, the power station continues to contribute to Britain's energy supply security.

During its lifetime, Ratcliffe-on-Soar has made a significant contribution to the regional economy, and Uniper has been working closely with stakeholders from across the region, including the Midlands Engine and local authorities, to understand how the Ratcliffe site can be part of sustainable growth in the East Midlands.

Our vision is to move towards becoming a zero-carbon technology and energy hub for the East Midlands. We see the site development creating employment based around modern industrial and manufacturing uses, with sustainable onsite energy generation.

In addition to generating sustainable electricity and heat for use by world-class businesses and institutions who choose to locate to Ratcliffe-on-Soar, the facility would support the future addition of advanced recycling and reuse technologies.

The EMERGE Centre would use safe, environmentally sustainable and reliable technology to generate up to 49.9MW of electricity; the

Uniper UK Limited
Compton House
2300 The Crescent
Birmingham Business Park
Birmingham B37 7YE
www.uniper.energy

For further information
please contact:

Sonia Luok
Senior PR Manager
T: +44 121 329 4404
M: +44 797 818 8368
E: Pressoffice.uk@uniper.energy
Out of hours Press Office: 0121
329 4587

Do you want to get Uniper press
releases via email? [Subscribe at
www.uniper.energy/news](http://www.uniper.energy/news)

1



equivalent power for around 90,000 homes – as well as having the capability to produce heat from around 500,000 tonnes of non-recyclable waste per year. This will reduce the quantity of waste that currently goes to landfill or is exported outside of the UK.

This project will be the first step towards a lower carbon future for Ratcliffe-on-Soar and will help the East Midlands meet its landfill diversion targets. The EMERGE Centre would also act as a catalyst for the region's wider vision, helping to attract other businesses who could benefit from the availability of reliable, lower carbon energy generated on-site.

Uniper will be inviting local residents, councils and other organisations to attend public information events, to be held in March 2020. These events will offer people the opportunity to understand more about our plans and meet the project team.

A detailed planning application is due to be submitted this summer and the project is planned to be completed and fully operational by 2025.

Andy Read, EMERGE Centre Project Manager for Uniper, said:

"The EMERGE Centre would be an important first step in securing jobs and investment at Ratcliffe-on-Soar after coal-fired generation ends. It would provide reliable and sustainable lower carbon energy and help reduce the amount of non-recyclable waste being diverted to landfill. I'd like to encourage people to come along to the public information events in March to find out more about our plans for the EMERGE Centre and wider vision for the site".

Public Information Days

Venue	Date	Time
Thrumpton Village Hall, Church Lane Thrumpton, NG11 0AX	Monday 9 th March 2020	3pm-7pm
Gotham Memorial Hall (Moonrakers Room) Nottingham Road, Gotham, NG11 0HE	Monday 16 th March 2020	3pm-7pm

For more information about the EMERGE Centre, please visit the project website www.uniper.energy/emerge



About Uniper

Uniper is a leading international energy company with activities in more than 40 countries and around 11,000 employees globally. Its business is the secure provision of energy and related services. Its main activities include power generation in Europe and Russia as well as global energy trading. The company is headquartered in Düsseldorf, Germany.

About Uniper UK <https://www.uniper.energy/uk>

This press release may contain forward-looking statements based on current assumptions and forecasts made by Uniper SE Management and other information currently available to Uniper. Various known and unknown risks, uncertainties and other factors could lead to material differences between the actual future results, financial situation, development or performance of the company and the estimates given here. Uniper SE does not intend, and does not assume any liability whatsoever, to update these forward-looking statements or to modify them to conform with future events or developments.

8.6 Appendix 6 Media Coverage

8.6.1 Link to article [Nottingham Post - 3 March 2020](#)

Huge new power plant could replace Ratcliffe-on-Soar power station

It could generate enough electricity to power 90,000 homes



How the new power station could look (Image: Uniper)

A large new power plant could be built on the site of the Ratcliffe-on-Soar power station.

Plans are due to be submitted later in the year but the firm behind the scheme says it could generate enough electricity to power 90,000 homes.

It would also save around half a million tonnes of non-recyclable waste from going to landfill - that's the equivalent weight of around 2,725 Boeing 747s.

The plant would work in a similar way to the [Eastcroft Incinerator](#), in Nottingham's London Road, but on a much larger scale.

Plans are at an early stage, but two consultation events have now been planned so [local residents](#) can be consulted on the project.

Uniper - the German-based company responsible for the project - already runs several similar plants across Europe, as well as a gas-powered plant in Retford and the current facility at Ratcliffe-on-Soar.

The old coal-powered plant, near the A453, is due to be decommissioned by 2025, in line with the Government's plan to stop all coal-fired generation by then, however, an exact date is yet to be finalised.

The new facility would be known as the 'Emerge Centre'.

Though the scheme would not be **zero carbon**, it would create dramatically less carbon than the current site, and Uniper says it would be the first step towards the site being 'a zero-carbon technology and energy hub for the East Midlands.' The new power plant forms part of much bigger plans for the area, currently being drawn-up by a multi agency group called the East Midlands Development Corporation.

If it comes to fruition, this could see tens of thousands of new jobs, and thousands of homes created over the Ratcliffe-on-Soar site, as well as Chetwynd Barracks and around the proposed HS2 station at Toton.

The idea for the new plant would be to take waste which is leftover from the recycling process - essentially whatever can't be recycled - and to use it to create electricity and heat, which could then be used for any businesses which choose to locate to the site.

Emissions are computer-monitored, as they are at London Road, and can also be monitored around the clock by the Environment Agency to ensure they meet regulations which are already among the most stringent in the world.

Additives are added to the gas to 'clean' it before it is released.

Plans are likely to be submitted to Nottinghamshire County Council later on this year, and a decision would then be expected on whether the scheme can proceed a few months later.

The company hopes the site could be fully operational by 2025 - **the deadline by which the coal power station has to close.**

Andy Read is the project manager of the scheme for Uniper, and said: "The Emerge Centre would be an important first step in securing jobs and investment at Ratcliffe-on-Soar after coal-fired generation ends.

"It would provide reliable and sustainable lower carbon energy and help reduce the amount of non-recyclable waste being diverted to landfill.

"I'd like to encourage people to come along to the public information events in March to find out more about our plans for the Emerge Centre and wider vision for the site".

Two public consultation events are planned for the project.

One will be held between 3pm and 7pm on Monday, March 9 at Thrumpton Village Hall.

The other will be between 3pm and 7pm on Monday, March 16 at Gotham Memorial Hall.

8.6.2 Link to article [West Bridgford Wire - 3 March 2020](#)

Huge new low-carbon power plant could replace Ratcliffe-on-Soar power station, bringing homes and jobs to the area

The plant would work in a similar way to the Eastcroft Incinerator, in Nottingham's London Road.



A large new power plant could be built on the site of the Ratcliffe-on-Soar power station.

Plans are due to be submitted later in the year but the firm behind the scheme says it could generate enough electricity to power 90,000 homes.

It would also save around half a million tonnes of non-recyclable waste from going to landfill – that's the equivalent weight of around 2,725 Boeing 747s.

The plant would work in a similar way to the [Eastcroft Incinerator](#), in Nottingham's London Road.

Plans are at an early stage, but two consultation events have now been planned so [local residents](#) can be consulted on the project.

Uniper – the German-based company responsible for the project – already runs several similar plants across Europe, as well as a gas-powered plant in Retford and the current facility at Ratcliffe-on-Soar.

The old coal-powered plant, near the A453, is due to be decommissioned by 2025, in line with the Government’s plan to stop all coal-fired generation by then, however, an exact date is yet to be finalised.

The new facility would be known as the ‘Emerge Centre’.

Though the scheme would not be zero carbon, it would create dramatically less carbon than the current site, and Uniper says it would be the first step towards the site being ‘a zero-carbon technology and energy hub for the East Midlands.’

The new power plant forms part of much bigger plans for the area, currently being drawn-up by a multi agency group called the East Midlands Development Corporation.

If it comes to fruition, this could see thousands of new jobs, and thousands of homes created over the Ratcliffe-on-Soar site, as well as Chetwynd Barracks and around the proposed HS2 station at Toton.

The idea for the new plant would be to take waste which is leftover from the recycling process – essentially whatever can’t be recycled – and to use it to create electricity and heat, which could then be used for any businesses which choose to locate to the site.

Emissions are computer-monitored, as they are at London Road, and can also be monitored around the clock by the Environment Agency to ensure they meet regulations which are already among the most stringent in the world.

Additives are added to the gas to 'clean' it before it is released.

Plans are likely to be submitted to Nottinghamshire County Council [later on](#) this year, and a decision would then be expected on whether the scheme can proceed a few months later.

The company hopes the site could be fully operational by 2025 – the deadline by which the coal power station [has to](#) close.

Andy Read is the project manager of the scheme for Uniper, and said: "The Emerge Centre would be an important first step in securing jobs and investment at Ratcliffe-on-Soar after coal-fired generation ends."

"It would provide reliable and sustainable lower carbon energy and help reduce the amount of non-recyclable waste being diverted to landfill.

"I'd like to encourage people to come along to the public information events in March to find out more about our plans for the Emerge Centre and wider vision for the site".

Two public consultation events are planned for the project.

One will be held between 3pm and 7pm on Monday, March 9 at Thrumpton Village Hall.

The other will be between 3pm and 7pm on Monday, March 16 at Gotham Memorial Hall.

8.6.3 Link to Twitter account [Loughborough Echo tweet - 14 March 2020](#)

← **Tweet**



Loughborough Echo

@loughecho



A LARGE new power plant could be built on the site of the Ratcliffe-on-Soar power station - and you can have your say soon. For the full story see today's Loughborough Echo newspaper



9:56 AM · Mar 14, 2020 · [TweetDeck](#)



8.6.4 Link to article [Leicester Mercury - 14 March 2020](#)

Huge new power plant planned to replace Ratcliffe-on-Soar power station near Loughborough

The site is due to be decommissioned by 2025



The Ratcliffe-on-Soar power station (Image: PA)

A plan for the coal-fired Ratcliffe-on-Soar power station near the M1 north of Loughborough is being put forward - with a vision for a new greener energy plant at its centre.

Plans are due to be submitted later in the year but the firm behind the scheme says it could generate enough electricity to power 90,000 homes.

It would also save around half a million tonnes of non-recyclable waste from going to landfill - that's the equivalent weight of around 2,725 Boeing 747s, [according to Nottinghamshire Live](#).

Plans are at an early stage, but two consultation events have now been planned so [local residents](#) can be consulted on the project.

Uniper - the German-based company responsible for the project - already runs several similar plants across Europe, as well as the current facility at Ratcliffe-on-Soar.

The old coal-powered plant, just over the Leicestershire border near the A453 between the M1 and Nottingham, is due to be decommissioned by 2025, in line with the Government's plan to stop all coal-fired generation by then, however, an exact date is yet to be finalised.

The new facility would be known as the 'Emerge Centre'.



How the new power station could look (Image: Uniper)

Though the scheme would not be zero carbon, it would create dramatically less carbon than the current site, and Uniper says it would be the first step towards the site being 'a zero-carbon technology and energy hub for the East Midlands.'

The new power plant forms part of much bigger plans for the south Nottinghamshire area, currently being drawn-up by a multi agency group called the East Midlands Development Corporation.

If it comes to fruition, this could see tens of thousands of new jobs, and thousands of homes created over the Ratcliffe-on-Soar site, as well as Chetwynd Barracks and around the proposed HS2 station at Toton.

The idea for the new plant would be to take waste which is leftover from the recycling process - essentially whatever can't be recycled - and to use it to create electricity and heat, which could then be used for any businesses which choose to locate to the site.

Emissions are computer-monitored, as they are at London Road, and can also be monitored around the clock by the Environment Agency to ensure they meet regulations which are already among the most stringent in the world.

Additives are added to the gas to 'clean' it before it is released.

Plans are likely to be submitted to Nottinghamshire County Council [later on](#) this year, and a decision would then be expected on whether the scheme can proceed a few months later.

The company hopes the site could be fully operational by 2025 - the deadline by which the coal power station [has to](#) close.

Andy Read is the project manager of the scheme for Uniper, and said: "The Emerge Centre would be an important first step in securing jobs and investment at Ratcliffe-on-Soar after coal-fired generation ends.

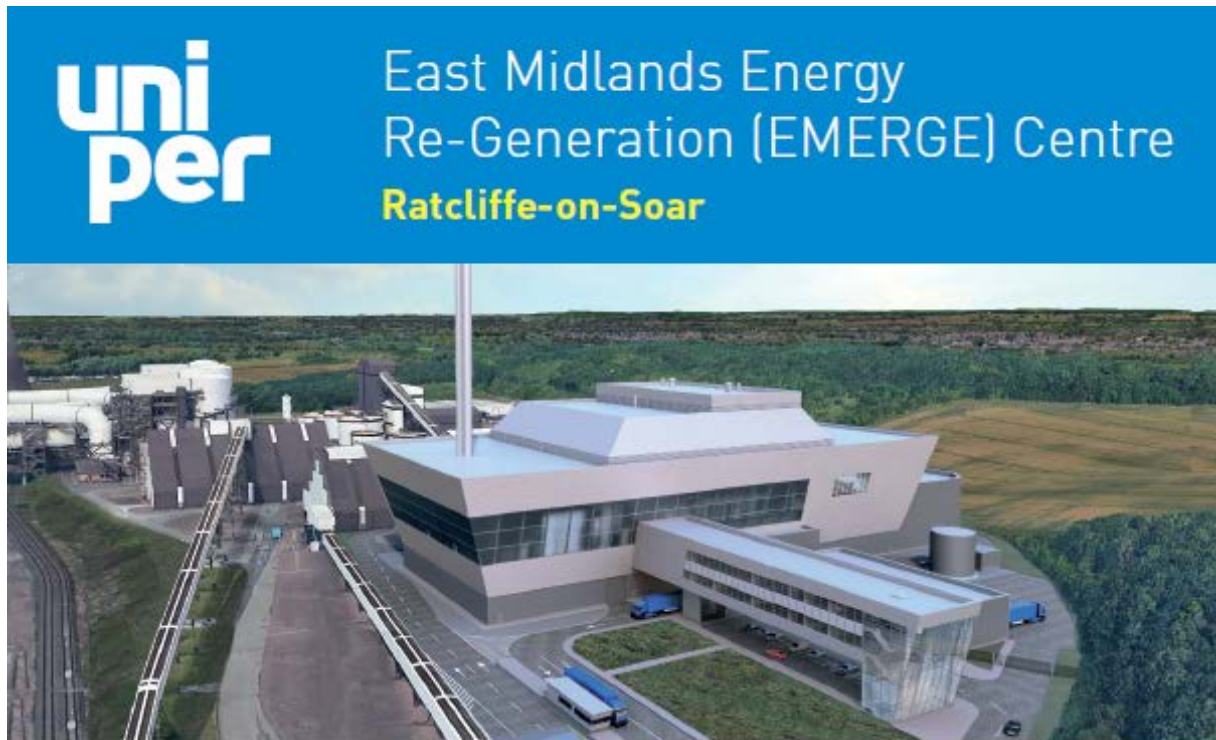
"It would provide reliable and sustainable lower carbon energy and help reduce the amount of non-recyclable waste being diverted to landfill.

"I'd like to encourage people to come along to the public information events in March to find out more about our plans for the Emerge Centre and wider vision for the site".

Two public consultation events are planned for the project.

One will be held between 3pm and 7pm on Monday, March 9 at Thrumpton Village Hall.

The other will be between 3pm and 7pm on Monday, March 16 at Gotham Memorial Hall.



Notice of public information days

Uniper is hosting two public information days for local residents to view details of our plans for a new energy recovery facility at the Ratcliffe-on-Soar power station site, to be called the East Midlands Energy Re-Generation (EMERGE) Centre.

At the events, information about the proposal will be available and members of the project team will be in attendance to answer questions on a one to one basis. Please come along, look at the plans and tell us what you think.

The events take place at:

Thrumpton Village Hall

Church Lane, Thrumpton, NG11 0AX
Monday 9th March 2020 3pm-7pm

Gotham Memorial Hall

(Moonrakers Room), Nottingham Road, Gotham, NG11 0HE
Monday 16th March 2020 3pm-7pm

For further information please contact us:

Freephone: 0800 169 5290 | Email: emerge@uniper.energy | Web: uniper.energy/emerge

8.8 Appendix 8 Post-Public Information Day Press Release



Press Release
March 25, 2020

Still time to have your say: Uniper welcomes views on plans for new energy project at Ratcliffe-on-Soar

- Local views shared on plans for a new energy recovery facility at Ratcliffe-on-Soar power station site - known as the EMERGE Centre
- Uniper welcomed around 90 people at recent public information events following invites to over 1,000 local households
- Feedback received will help shape planning application due to be submitted in Summer 2020

Around 90 people attended Uniper's public information events on its plans for a new energy recovery facility to be located at Ratcliffe-on-Soar – known as, the East Midlands Energy Re-Generation (EMERGE) Centre.

Two public information events were held over two weeks in early March 2020 at community venues in Thrumpton and Gotham, Nottinghamshire. Over 1,000 households and stakeholders neighbouring the site were invited to attend, with the events widely promoted.

At the exhibition, there were information boards and visuals about the project and members of the project team were on-hand to answer questions about the plans. The information exhibited provided details of the EMERGE Centre building design proposals, and how potential environmental impacts will be managed. These included noise, air pollution, odour, transport to the site and traffic management.

To give people who were unable to attend the opportunity to review our plans, we have published the information presented at these events on the project website: uniper.energy/emerge. We have also added a frequently asked questions document for further details.

We encourage people to submit their views on the EMERGE Centre plans by the 31st March 2020. Where possible, the feedback received will help to shape the planning application that is submitted.

The results of Uniper's information events and feedback received, will be presented in a feedback report that will accompany our application for detailed planning permission to Nottinghamshire County Council in Summer 2020. There will be a further opportunity to provide feedback on the proposals through the statutory consultation held by the local planning authority for this application.

The facility is planned to be completed and fully operational by 2025.

Uniper UK Limited
Compton House
2300 The Crescent
Birmingham Business Park
Birmingham B37 7YE
www.uniper.energy

For further information
please contact:

Sonia Luok
Senior PR Manager
T: +44 121 328 4404
M: +44 787 818 8368
E: Pressoffice.uk@uniper.energy
Out of hours Press Office: 0121
328 4687

Do you want to get Uniper press
releases via email? Subscribe at
www.uniper.energy/news



For more information, call the project team on 0800 169 5290 or email emerge@Uniper.energy, or visit the website: uniper.energy/emerge

About the EMERGE Centre

The facility would use safe, environmentally sustainable and reliable technology to generate up to 49.9 MW of electricity; the equivalent power for around 90,000 homes – as well as having the capability to produce heat from around 500,000 tonnes of non-recyclable waste per year. This will reduce the quantity of waste that currently goes to landfill or is exported outside of the UK.

Our vision is to move towards becoming a zero-carbon technology and energy hub for the East Midlands. We see the site development creating employment based around modern industrial and manufacturing uses, with sustainable onsite energy generation.

This project will be the first step towards a lower carbon future for Ratcliffe-on-Soar and will help the East Midlands meet its landfill diversion targets. The EMERGE Centre would also act as a catalyst for the region's wider vision, helping to attract other businesses who could benefit from the availability of reliable, lower carbon energy generated on-site.

About Uniper

Uniper is a leading international energy company with activities in more than 40 countries and around 11,000 employees globally. Its business is the secure provision of energy and related services. Its main activities include power generation in Europe and Russia as well as global energy trading. The company is headquartered in Düsseldorf, Germany.

About Uniper UK <https://www.uniper.energy/uk>

This press release may contain forward-looking statements based on current assumptions and forecasts made by Uniper SE Management and other information currently available to Uniper. Various known and unknown risks, uncertainties and other factors could lead to material differences between the actual future results, financial situation, development or performance of the company and the estimates given here. Uniper SE does not intend, and does not assume any liability whatsoever, to update these forward-looking statements or to modify them to conform with future events or developments.

8.9 Appendix 9 Post-Public Information Day Media Coverage

8.9.1 Link to article [Nottingham Post - 30 March 2020](#)

How you can 'help shape' new energy project planned for Ratcliffe-on-Soar

There is still time to have your say on the plans|



The Ratcliffe-on-Soar power station (image: PA)

People are being invited to give their views on a new energy project to be built at Ratcliffe-on-Soar power station.

The huge new power plant known as the 'Emerge Centre' **could potentially provide electricity for up to 90,000 homes** while saving around half a million tonnes of **non-recyclable** waste from going to landfill.

It forms part of much bigger plans for the area, currently being drawn-up by a multi agency group called the East Midlands Development Corporation.

Plans for the new project were unveiled earlier this year, however, official applications are yet to be submitted.

In the meantime, Uniper - the German-based company responsible for the project - have held two public consultation events at the beginning of March to get local reaction and feedback.

More than 1,000 households were invited to attend the two events held at community centres in Thrumpton and Gotham.

At the exhibition, there were information boards and visuals about the project and members of the project team were on-hand to answer questions about the plans.

Details of the Emerge - East Midlands Energy Re-Generation - Centre building design proposals were shown, and how potential environmental impacts will be managed.

These included noise, air pollution, odour, transport to the site and traffic management.

To give people who were unable to attend the opportunity to review the plans, Uniper has published the information presented at these events on the project website.

There is still time to have your say on the project and people are encouraged to submit their views on the plans by the March 31.

A spokeswoman for the company said: "Where possible, the feedback received will help to shape the planning application that is submitted.

"The results of Uniper's information events and feedback received, will be presented in a feedback report that will accompany our application for detailed planning permission to Nottinghamshire County Council in Summer 2020.

"There will be a further opportunity to provide feedback on the proposals through the statutory consultation held by the local planning authority for this application."

The facility is planned to be completed and fully operational by 2025.

8.9.2 Link to article [Let's Recycle - 3 April 2020](#)

ENERGY

3 APRIL 2020 by Joshua Doherty

Uniper to enter UK EfW market

International energy company Uniper, formed in 2016 following a split from E.ON, will submit plans to Nottinghamshire county council this summer for a 500,000 tonnes per year capacity energy from waste plant.



Computer generated image of the 500,000 tonnes per year capacity plant

The facility will be based at the Ratcliffe-on-Soar Power Station, known as the East Midlands Energy Re-Generation (EMERGE) Centre. Uniper says it hopes to have the plant operational by 2025.

Uniper added that the plant will generate up to 49.9MW of electricity, "helping the East Midlands region meet its landfill diversion targets".

In a statement given to [letsrecycle.com](#), a spokesperson for the company said the waste will be sourced from the Nottinghamshire region and any waste transfer stations within a two hour drive.

"It is not possible to confirm exactly where future waste supplies will come from at this time, though it is expected that a significant amount of the waste will be sourced from Nottinghamshire and the surrounding counties of Derbyshire and Leicestershire.

"Due to limited processing capacity within the UK, waste transfer stations within a two-hour drive of Ratcliffe-on-Soar will also be considered," the Uniper spokesperson said. The facility will generate energy from non-hazardous domestic and commercial waste left over from the recycling process, Uniper says, while creating up to 600 temporary construction jobs and 45 permanent jobs on the site once operational.

"It is expected that a significant amount of the waste will be sourced from Nottinghamshire and the surrounding counties"

Uniper spokesperson

Market

The plant represents Uniper's first movement into the UK EFW market. It currently specialises in consultancy services for UK biomass plants and runs coal and gas power plants.

These include seven power plants in the UK, including six natural gas plants in Willesden, North Lincolnshire, Kent, Enfield, Nottinghamshire and Flintshire.

It also runs a coal powered plant in Ratcliffe.

Alongside this, Uniper has facilities in Germany, Sweden, the Netherlands, Hungary and Russia.

East Midlands

Uniper's move into the EFW market in the East Midlands also coincides with Biffa announcing in February it had reached financial close on its first EFW in Leicestershire (see letsrecycle.com story)

Biffa says the Newhurst EFW facility is expected to cost £285-295 million to construct and will have the capacity to treat 350,000 tonnes of residual household and commercial waste a year. It will also produce 42 megawatts of electricity.

Uniper says it will be submitting a planning application supported by an Environmental Impact Assessment in Summer 2020 to Nottinghamshire county council.

8.10 Appendix 10 Public Information Day Banner Stands



Uniper UK Limited is putting forward plans for development of an Energy Recovery Facility (ERF) at the Ratcliffe-on-Soar power station site – known as East Midlands Energy Re-Generation (EMERGE) Centre. The facility would use safe, environmentally sustainable and reliable technology to generate energy from non-recyclable, non-hazardous domestic and commercial waste.

The EMERGE Centre would be located on previously developed land within the north-west boundary of the site.



This project forms part of a wider vision for the Ratcliffe-on-Soar site to move towards becoming a zero carbon technology and energy hub for the East Midlands region.

The EMERGE Centre is the first step towards delivering this vision, and would bring direct benefits to the environment and local community, including:

<p>Generate up to 49.9 MW of lower carbon electricity</p> <p>Enough electricity to power around 90,000 households</p>	<p>Create around 45 full time jobs once operational</p> <p>Create up to 600 jobs during the peak construction period</p>	<p>Reduce landfill or export of waste by around 500,000 tonnes/year</p> <p>Help the East Midlands region meet its landfill diversion targets</p>
<p>Catalyst for wider vision for zero carbon technology and energy hub at Ratcliffe-on-Soar</p>		





Energy recovery

Energy recovery facilities use well established technology to convert residual waste into useable energy under carefully controlled conditions. With over 400 similar facilities in operation across Europe, they play an important role in helping meet the UK's ambitions to effectively and efficiently reduce waste and manage its impact on the environment by:

- Converting non-hazardous and non-recyclable waste into useable energy
- Providing reliable, sustainable and lower carbon electricity
- Diverting non-recyclable waste from landfill



How energy recovery works

- Pre-sorted commercial and household waste is brought to site in enclosed lorries and unloaded in a fully enclosed building (tipping hall)
- It is then deposited into a bunker where the crane grabs the waste and feeds it into the hopper
- The waste drops into a feed chute onto a moving grate generating heat to burn waste at 850 degrees celsius
- The heat produced makes steam which then drives a turbine that creates electricity for export to the National Grid
- Gases produced during the combustion process are carefully treated to meet strict emissions regulations before being released into the atmosphere through the chimney. Emissions are continuously monitored and regulated by the Environment Agency
- Residues, including ash produced by the process, will be recycled or reused where possible

Freephone:
0800 169 5290

Email:
emerge@uniper.energy

Web:
uniper.energy/emerge

uni per Dealing with our waste

The EMERGE Centre would be designed to thermally treat a wide range of non-recyclable wastes sourced from both commercial and local authority sources. This includes the waste people put into their non-recyclable (usually black) wheeled bins.

It also has the ability to include biomass as part of the fuel mix, which would allow the EMERGE Centre to cope with any future changes in waste composition, for example, as a result of improved recycling, reduced plastic use, or separate collection of food wastes. After reducing, reusing and recycling, the recovery of energy from waste is considered to be the most sustainable option for treatment of residual waste. There are a number of benefits, including:

- Treating waste that cannot be recycled or composted and is currently buried in landfill or exported outside the UK
- Reducing the amount of methane released from landfill (methane is over 20 times more damaging compared to carbon dioxide)
- Generating energy in the form of electricity and heat
- Supplying lower carbon energy to the National Grid
- Delivering much-needed sustainable residual waste management infrastructure within the East Midlands region



Freephone:
0800 169 5290

Email:
emerge@uniper.energy

Web:
uniper.energy/emerge



Central to the East Midlands economy

The Ratcliffe-on-Soar site benefits from excellent transport links, including road and rail. There is also existing infrastructure to allow for sustainable energy projects, including the EMERGE Centre, to connect easily to the National Grid. Uniper is proud of the contribution Ratcliffe-on-Soar makes to the East Midlands regional economy, and to understand how the site can be part of sustainable growth in the region, we have been working closely with the Midlands Engine and local councils who are currently undertaking a feasibility study for the creation of a development corporation. This initiative has identified the proposed HS2 station at Toton, the East Midlands Airport and the Ratcliffe-on-Soar sites as amongst the most strategically important catalysts for future economic growth in the East Midlands region.

Our vision for the Ratcliffe-on-Soar site is to create employment based around modern industrial and manufacturing uses, underpinned by a sustainable energy theme.

The vision seeks to deliver:

- High value jobs
- Modern industry and manufacturing served by an on-site sustainable 'Energy Hub'
- Research, development and innovation
- A centre to foster regional talent (including universities and established industry)
- A national focal point for low and zero carbon technology.

The first step in delivering our vision will be the East Midlands Energy Re-Generation (EMERGE Centre). It would be the anchor project for a zero-carbon technology and energy hub for the East Midlands, helping to attract other businesses and investors who can benefit from the availability of reliable, lower carbon energy generated on-site. In addition, the EMERGE Centre would support the future addition of advanced recycling and reuse technologies.

This project will be the first step towards a lower carbon future for the Ratcliffe-on-Soar site and will help the East Midlands meet its landfill diversion targets.



Freephone:
0800 169 5290

Email:
emerge@uniper.energy

Web:
uniper.energy/emerge

The impact on the environment will be well managed and within the latest environmental standards. As part of our planning application we will be submitting a full EIA which will assess the potential impacts on:

- Air quality and odour
- Ecology
- Landscape and visual
- Noise
- Surface water and flood risk
- Traffic and transportation

Air quality and odour

The EMERGE Centre will require an Environmental Permit from the Environment Agency (EA) before the facility comes into operation. The permit will only be granted if the EA is satisfied the facility would meet the requirements of the Industrial Emissions Directive and the Best Available Technologies conclusions, regulating emissions limits for facilities like the EMERGE Centre.

The air quality assessment will look into the potential impacts of emissions to air from the proposed development and provide details of any recommended mitigation measures. The assessment will include:

- Cumulative impacts
- Dispersion modelling
- Human health risk
- Impacts of dust during construction
- Monitoring at sensitive receptor points
- Odour control measures
- Potential impacts on air quality
- Vehicle movements



Ecology

Assessments of the local ecology and habitats surrounding the site will be undertaken as part of the EIA. This will look at:

- Impacts when operational and any mitigation measures needed
- Likely or possible impacts during the construction phase on habitats
- Mitigation, compensation and enhancement measures
- Nearby statutory designated sites

Freephone:
0800 149 5290

Email:
emerge@uniper.energy

Web:
uniper.energy/emerge

Landscape and visual impact

The proposed development lies within the existing power station site. A landscape and visual impact assessment will be carried out to show:

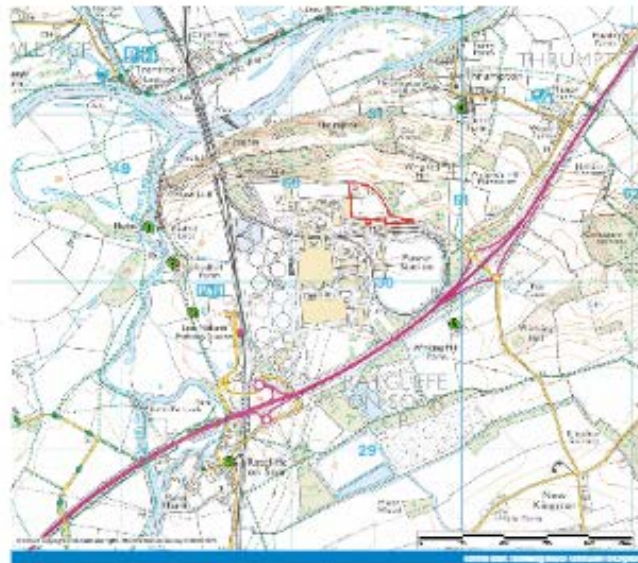
- Existing baseline conditions and landscape character
- Photographs from agreed viewpoint locations
- Screening and landscaping features of the proposal
- Visual changes with and without the existing power station structures



Noise

A full assessment will be undertaken of the potential noise impact of the proposed development on sensitive receptor points during construction and operation. The scope of the assessment will be agreed with Nottinghamshire County Council and Rushcliffe Borough Council Environmental Health Officers. The assessment will include:

- Development of a detailed noise model, based on the proposed site layout
- The potential effects during the construction period
- The potential effects in operation
- A survey of existing background noise levels at agreed locations



Freephone:
0800 169 5290

Email:
emerge@uniper.energy

Web:
uniper.energy/emerge

Surface water and flood risk

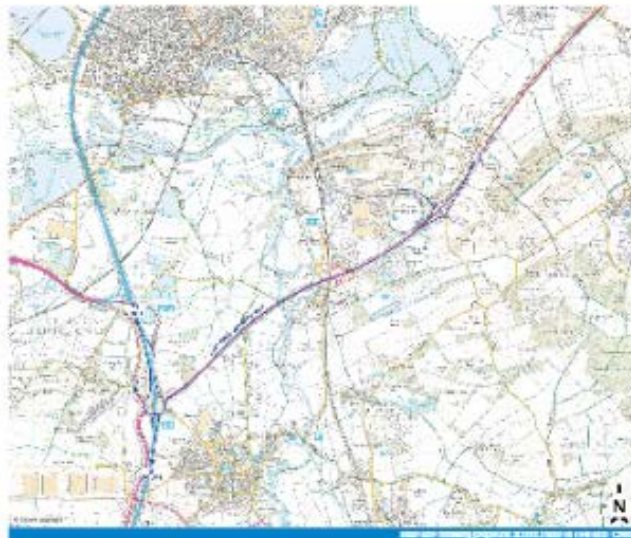
The Environment Agency (EA) Flood Zone mapping shows the site to be entirely within Flood Zone 1 (defined as land having a less than 1 in 1,000 annual probability of fluvial or tidal flooding).

The EA Flood Risk for surface water mapping shows that the majority of the site has a 'very low' risk of surface water flooding; however, a small proportion of the site has a slightly higher risk of surface water flooding. A detailed Flood Risk Assessment would be prepared to assess the potential flood risk, describe the existing drainage infrastructure and define a drainage design. The design would demonstrate that the proposal would not result in a flood risk either at the site or in the wider area.

Traffic and Transportation

The impact of traffic associated with the proposed development will be considered through the preparation of a formal Traffic Assessment (TA). The scope of the TA will be agreed with Nottinghamshire County Council and Highways England. The TA will look at:

- Assessing the impact of additional traffic generated by the developments on the road network, now and in the future
- Baseline conditions of road networks around the A453 Remembrance Way
- Impact of traffic both during construction and operation including forecasting the number and type of traffic movements
- Options for rail deliveries



Freephone:
0800 169 5290

Email:
emerge@uniper.energy

Web:
uniper.energy/emerge



Have your say and next steps

Over the coming months, Uniper will be carrying out the Environmental Impact Assessment and preparing the Environmental Statement that will accompany our planning application. As part of this process, we want to hear from you.

Please take a moment to fill in our feedback questionnaire and post it in the box provided or return it in the postage-paid envelopes available from staff here today. We welcome your views, which where possible will help to shape the application that is submitted.

Nottinghamshire County Council will carry out its own consultation process once the application is submitted, seeking the views of local stakeholders and statutory consultees, before reaching a decision.

Proposed timeline



Keep in touch

If you have any further queries or have any questions or comments, you can contact the team using the following methods:

Freephone:
0800 169 5290

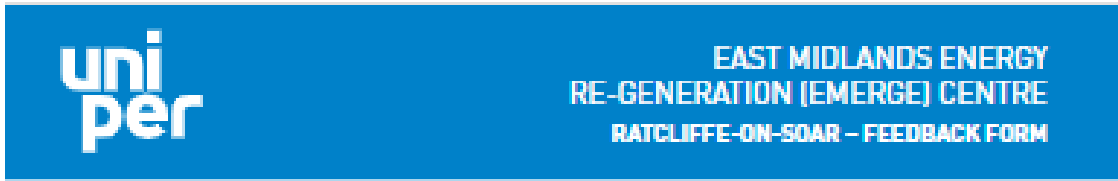
Email:
emerge@uniper.energy

Web:
uniper.energy/emerge

Freephone:
0800 169 5290

Email:
emerge@uniper.energy

Web:
uniper.energy/emerge



Privacy Statement

By filling in this form, you are agreeing that BECG can hold and process your personal data in relation to this public consultation exercise.

- BECG will only share your personal data with Uniper UK Limited for planning evaluation purposes only.
- Your identifiable, personal data will not be used for any other purposes without your consent.

BECC and Uniper UK Limited will use your data to:

- Send you updates about the project (where you provide contact details).
- Develop a Statement of Community Consultation (or similar document) about this public consultation that will be submitted to the planning authority or similar body, this will be a publicly available document. Your comments will be anonymous, and we will only identify you in these reports with your express permission.

If you provide us with your contact details, we might also contact you to ask you more about the comments you've made.

BECC acts on behalf of Uniper UK Limited to run public consultation activities.

About the Consultation

We welcome feedback from local residents and stakeholders on our proposals to develop an Energy Recovery Facility (ERF) at the Ratcliffe-on-Soar Power Station site – known as East Midlands Energy Re-Generation (EMERGE) Centre. Uniper UK Limited believes that the views of the local community are important, along with conservation and economic factors, when redeveloping sites.

Please send all feedback by 31st March 2020.

Your Details

Due to GDPR regulations, if you choose not to fill in all parts of this section, we will not be able to include your comments in the consultation process.

Title (Miss/Mrs/Ms/Mr/Other):

First Name or Initial:

Surname:

Postcode:

Age Group (please circle):

Under 13	13-17	18-24	25-34
35-44	45-54	55-64	65-74
75-84	85+		

Your Contact Details

We will use these details to contact you and update you on the proposals. You don't have to fill in this section if you'd rather we didn't contact you.

Address:

Email:

Telephone:

Please tick here if you would like to receive news and updates regarding the proposals

***PLEASE COMPLETE ALL SECTIONS IN BLOCK CAPITALS**

Once completed, please fold this feedback form in half and post it into the ballot box before you leave the event. If you wish to fill it in later and return it by post, please place it in an envelope and return it to:

Exhibition Response, BECG, Chancery Place, 50 Brown Street, Manchester, M2 2JT.

You **MUST** affix a stamp, unless you have a prepaid envelope. If you do not have a 1 response envelope, please call 0800 169 5290 and we will arrange for one to be sent to you.

How informative have you found our event? (please tick)

Very informative Somewhat informative Not informative I'm unsure

Do you have any further comments or questions regarding our proposal?

19420/0320

Data Protection

We hold all personal data in accordance with the General Data Protection Regulation (GDPR) (EU) 2016/679 and your personal data will not be transferred outside of the European Economic Area. You can see our full Privacy Statement, Data Protection Policy, Data Retention Policy and find out how to make a Subject Access Request at the following website address beeg.com/dp or by contacting us on 0962 893 893 / dataprotection@beeg.com.

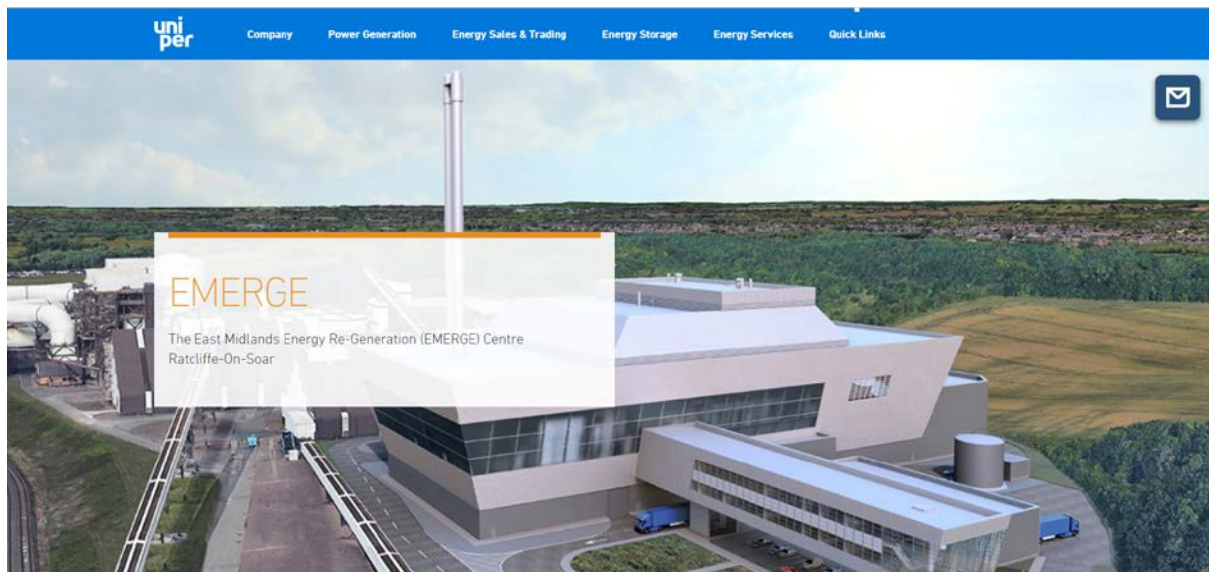
FOR FURTHER INFORMATION PLEASE CONTACT US AT:

Freephone:
0800 169 5290

Email:
emerge@uniper.energy

Web:
uniper.energy/emerge

8.12 Appendix 12 Screenshot of the Website



[About us](#) [Project](#) [Timeline](#) [Latest News](#) [Project Documents](#) [Contact us](#)

Uniper UK Limited is putting forward plans for development of an Energy Recovery Facility at the Ratcliffe-on-Soar Power Station site – known as the East Midlands Energy Re-Generation (EMERGE) Centre. The facility would generate energy from non-hazardous domestic and commercial waste left over from the recycling process.

This project forms part of a wider vision for Ratcliffe-on-Soar – to move towards becoming a zero carbon technology and energy hub for the East Midlands region.

The EMERGE Centre is the first step towards delivering this vision, and would bring direct benefits to the environment and local community, including:

- Generating up to 49.9 MW of lower carbon electricity - enough to power around 90,000 homes
- Preventing approximately 500,000 tonnes of residual waste going to landfill or being exported outside of the UK each year
- Creating up to 600 temporary construction jobs, and around 45 permanent jobs on the site, once operational
- Helping the East Midlands region meet its landfill diversion targets

The EMERGE Centre aims to be operational by 2025.



East Midlands Energy Re-Generation (EMERGE) Centre

June 2020

Frequently Asked Questions

As part of bringing forward plans for the EMERGE Centre, Uniper undertook a programme of pre-application engagement inviting over 1000 local households and stakeholders neighbouring the site to learn about the proposal, ask questions and register their feedback. Two public information events were held over two weeks in early March 2020 at community venues in Thrumpton and Gotham, Nottinghamshire.

Prior to the submission of the planning application to Nottinghamshire County Council (NCC), Uniper undertook a number of assessments into the potential effects of the proposed development on the local environment. The outcome of this work is set out in the Environmental Statement, which accompanies our application for planning permission to NCC. There were a number of recurring questions from comments received during the pre-application community engagement. We have collated them into this FAQ document, which has been updated to include information from the ES.

To view the planning application, please visit Nottinghamshire County Council's website at XXXX

If you have any further questions, not included in these FAQs, please do get in touch with us on our Freephone line on **0800 169 5290** or by email at emerge@uniper.energy.

Q. What is an energy recovery facility?

A. An energy recovery facility takes non-hazardous domestic and commercial waste left over from the recycling process, that has no viable alternative use, and converts it into reliable and sustainable lower carbon energy, reducing the need for landfill. Energy recovery facilities play an important role in helping meet the UK's ambitions to effectively and efficiently reduce waste and manage its impact on the environment.

Q. How much power will the EMERGE Centre produce?

A. The facility will be designed to generate up to 49.9 megawatts (MW) of electricity – this is enough energy to power around 90,000 homes.

Q. How many jobs will the proposal create?

A. We expect the EMERGE Centre to create up to 600 temporary construction jobs, and around 45 permanent jobs on the site, once operational.

Q. What is the timeline for construction and the site being operational?

A. Uniper has recently submitted a planning application to Nottinghamshire County Council – the local authority responsible for determining planning applications for facilities like the EMERGE Centre. Subject to receiving planning permission, construction is expected to start in early 2022, with the facility expected to be fully operational by 2025.

Q. When will the existing coal-fired power station be decommissioned and the cooling towers removed?

A. Ratcliffe-on-Soar power station has been supplying reliable electricity to the UK energy market for over 50 years. Now the UK is moving away from coal to lower carbon energy solutions, the Government has committed to end the generation of electricity from coal-fired power stations by October 2025. A decision on a closure date for Ratcliffe-on-Soar has yet to be made, but this will be in line with Government policy. It is anticipated that following closure, the power station will be decommissioned and this will include the demolition of key structures.

Q. How much waste can be handled by the proposed facility?

A. The EMERGE Centre would be capable of accepting around 500,000 tonnes of pre-treated residual waste per year. The waste delivered to site would initially be transported by road in enclosed vehicles / containers, but options are also being explored to utilise the existing railway line as well.

Q. What type of waste will be received and processed at the EMERGE Centre?

A. The EMERGE Centre would treat a wide range of non-recyclable wastes from both commercial and local authority sources. This includes the waste people put into their non-recyclable (usually black) wheelie bins. The facility would also have the ability to cope with any future changes in waste composition, for example, as a result of improved recycling, reduced plastic use, or separate collection of food wastes. The residual waste would arrive to site pre-sorted from local authority or commercial waste handling facilities.

Q. Where will the waste come from?

A. It is not possible to confirm exactly where future waste supplies will come from at this time, though it is expected that a significant amount of the waste will be sourced from Nottinghamshire and the surrounding counties of Derbyshire and Leicestershire. Due to limited processing capacity within the UK, waste transfer stations within a two-hour drive of Ratcliffe-on-Soar will also be considered.

Q. Will waste be stored and sorted at site?

A. The proposed EMERGE Centre will have enough waste storage capacity to operate the facility for five days at a time. All waste will be fully enclosed within the main building under negative pressure to ensure no odour escapes outside into the atmosphere. Our planning application does not include plans for separate waste sorting on site. The waste delivered to site will come pre-sorted from existing waste transfer stations. The EMERGE Centre would support the future addition of advanced recycling and reuse technologies, and options are being explored in this area.

Q. What level of emissions will be released by the EMERGE Centre? And how do you propose to minimise these emissions?

A. The EMERGE Centre will be designed to treat non-hazardous waste only. Uniper's assessment of potential environmental effects relating to the construction and operation of the facility concluded that the EMERGE Centre will not have any significant environmental effects in relation to air quality, odour and human health. The design will comply with the requirements of the Industrial Emissions Directive and the Best Available Techniques (BAT) Conclusions regulating emissions limits for facilities like the EMERGE Centre. A continuous emissions monitoring system (CEMS) will be installed at the EMERGE Centre to monitor the environmental performance of the facility once it becomes operational. This system will, for example, measure the concentration of gases emitted during the energy recovery process. The emissions data is collected, recorded and reported to the Environment Agency to ensure compliance with the emissions limits set by the same body.

Q. Will this proposal affect local air quality?

A. Uniper has undertaken an Air Quality Assessment as part of the Environmental Impact Assessment (EIA). The EIA looked at all potential air quality impacts, including emissions from vehicles leaving and entering the site. The assessment concludes that there will be no significant adverse effects due to emissions on human health, air quality or ecology, including neighbouring Sites of Special Scientific Interest, Local Nature Reserves or Local Wildlife Sites. Once the facility becomes operational, emission levels will be continuously monitored to ensure it complies with the limits set by the Environment Agency.

Q. Will the EMERGE Centre emit odour? And how will you control any odour produced by waste held at the site?

A. Assessments carried out by Uniper to date indicate that the operation of the EMERGE Centre is not expected to release any significant odour into the atmosphere. Prior to the EMERGE Centre becoming fully operational, a detailed odour control plan will be included in the environmental permit application to be submitted to the Environment Agency. It will set out the mitigation measures that will be implemented to eliminate any odour, with levels monitored to ensure they comply with the limits set by the Environment Agency.

We have built in the appropriate mitigations into the building design to eliminate odour including:

- Waste being delivered to the site in enclosed vehicles (or containers) and tipped inside the building
- Systems put in place inside the tipping and boiler halls to prevent odours, dust or litter from escaping from the building
- Conditions within the refuse bunker, which could cause odour, will be prevented by regular mixing of the waste by crane operators

Q. Will I be able to hear any noise from the facility?

A. The EMERGE Centre building will be designed to reduce noise, for example, through the use of construction materials and technology installed inside the facility. Assessments submitted conclude that the operation of the EMERGE Centre will result in no significant noise impacts.

Q. How will the EMERGE Centre impact traffic? How will the site be accessed, at what times and by how many vehicles?

A. Uniper's preferred road access to and from the site during construction and operation would be via the power station HGV entrance located off the A453 onto Barton Lane. A transport assessment has been carried out as part of our Environmental Impact Assessment (EIA). The assessment looked at any likely impacts from traffic during both the construction and operation of the facility.

During operation, we anticipate that the vast majority of deliveries to site will take place Monday to Friday, between the hours of 06.00 and 18.00, with only a limited number of movements occurring outside of these times. We have estimated that there will be approximately 155 HGVs coming to the site on weekdays, which equates to around 310 additional two-way HGV movements on the local highway (an increase of less than 7% on existing HGV levels). Weekday car trips for staff and visitors are estimated at 50 (i.e. 100 two-way car movements).

Q. Will the EMERGE Centre utilise its rail connections as a method of delivering waste to the site?

A. The residual waste delivered to site would initially be transported by road in enclosed vehicles / containers. Options are being explored to use the existing railway line to accept deliveries of residual waste to the site.

Q. What impact will the EMERGE Centre have on local wildlife?

A. The EMERGE Centre will be located on previously developed land within the perimeter of the existing power station site, that has been in operation for over 50 years. Assessments submitted as part of Uniper’s planning application conclude that there would be no effect on ecology resulting from the proposed development. The location of the EMERGE Centre consists of hardstanding and has been assessed as having no potential to support protected species. During the construction and operation of the EMERGE Centre, our assessments indicate there will be no significant environmental effects on surrounding conservation areas.

Q. Will the EMERGE centre have any community support funds available for local organisations?

A. Uniper UK Limited is currently in the early stages of developing plans for the development of an energy recovery facility – known as the EMERGE Centre. Ratcliffe-on-Soar power station has supported many local community groups and initiatives for over 50 years. We will continue to work with local authorities and other key stakeholders to understand how the Ratcliffe-on-Soar site could continue to play a key role within the local community by identifying the most appropriate ways the project could help to support local organisations potentially impacted by the EMERGE Centre proposals. To put forward your suggestions, please contact emerge@uniper.energy.

Q. How does the EMERGE Centre respond to the UK’s Net Zero targets?

A. Uniper fully supports the energy transition. As a business we have set our own ambitious target for our European power generation portfolio (including the UK) to become carbon neutral by 2035. Options we are actively exploring to do this include power-to-gas, utilising electricity generated by renewables for the production and storage of green hydrogen. We are also looking at technologies such as carbon recycling and producing synthetic carbon-neutral fuels and chemicals that will enable companies in other sectors to decarbonise.

The EMERGE Centre forms part of a wider vision for the Ratcliffe-on-Soar site. It is the first step towards our vision to create a lower carbon future for the site and will become the anchor project for a zero-carbon technology and energy hub for the East Midlands.

We have set out in the planning submission a detailed sustainability assessment which demonstrates how the EMERGE Centre could be compatible with net zero by 2050. This can be found here [[insert hyperlink to planning file](#)].

The assessment shows that the EMERGE Centre will contribute to a reduction in greenhouse gas emissions from its first day of operations. Further CO₂ savings could be achieved via changes to the fuel composition and other low carbon technologies being deployed at Ratcliffe-on-Soar in the future.

At the point the EMERGE Centre becomes operational, the facility would save greenhouse gas emissions equivalent to 106,000 tonnes of CO₂ a year compared to the alternative of landfilling the waste, which is the equivalent to heating 39,259 UK homes¹.

Whilst we cannot predict what technologies will be available in thirty years’ time, a road map is being developed to set-out a journey to achieve a net zero future at Ratcliffe-on-Soar.

This journey is likely to feature a mix of the technologies that Uniper is exploring across the business, for example:

- | | |
|-------------------------------|--|
| Day 1 of Operations
(2025) | <ul style="list-style-type: none">• EMERGE Centre will recover energy from waste left over from the recycling process, reducing greenhouse gas emissions by helping avoid the need for landfill or export abroad |
|-------------------------------|--|

¹ <https://citu.co.uk/citu-live/what-is-the-carbon-footprint-of-a-house>

Short-Mid Term
(2025 – 2035)

- EMERGE Centre is designed to treat a wide range of non-recyclable wastes, allowing for fuel flexibility should the nature of the incoming waste composition change over time, for example, as a result of improved recycling
- EMERGE Centre is designed to be 'CHP ready' for connection to a district heating scheme, with industrial users or manufacturers who choose to locate to the site in the future, able to access lower carbon energy and heat generated by the facility
- Changes to the composition of the fuel mix to reduce the non-biogenic carbon (e.g. rubber and plastic) contained in the incoming waste stream driven by Government policy on recycling
- Potential co-location of an advanced recycling facility to recycle or reuse products extracted from the incoming waste stream

Mid - Longer Term
(2030 – 2050)

- Change in fuel stock to 100% biomass waste (e.g. agricultural and construction industry wastes)
- Carbon Capture and Use (and potentially storage) – taking the CO₂ produced from the use of fossil fuels in electricity generation and industrial processes, preventing it from entering the atmosphere
- Using market arrangements to offset overall CO₂ emissions with bioenergy crops with carbon capture and storage (BECCS) – the process of extracting bioenergy from biomass and capturing and storing the carbon, thereby removing it from the atmosphere